

Recombinant Human METAP2 protein, His-tagged

Cat. No. METAP2-203H Lot. No. (See product label)

SPECIFICATION

Product Overview	Recombinant Human METAP2 protein(NP_006829.1) (Met1-Tyr478) was expressed in Insect Cells with a polyhistidine tag at the C-terminus.
Species	Human
Source	Insect Cells
ProteinLength	1-478 aa
Form	Lyophilized from sterile 20 mM Tris, 500 mM NaCl, 10 % glycerol, pH 7.4.
Molecular Mass	The recombinant human METAP2 consists 489 amino acids and predicts a molecular mass of 54.3 kDa.
Endotoxin	< 1 EU/g as determined by LAL test.
Purity	> 85 % as determined by SDS-PAGE
Storage	Store it under sterile conditions at -20°C to -80°C upon receiving. Recommend to aliquot the protein into smaller quantities for optimal storage. Avoid repeated freeze-thaw cycles.
Reconstitution	It is recommended that sterile water be added to the vial to prepare a stock solution of 0.2 ug/ul. Centrifuge the vial at 4°C before opening to recover the entire contents.

 Tel: 1-631-559-9269 1-516-512-3133

 Email: info@creative-biomart.com  Fax: 1-631-938-8127

 45-1 Ramsey Road, Shirley, NY 11967, USA

GENE INFORMATION

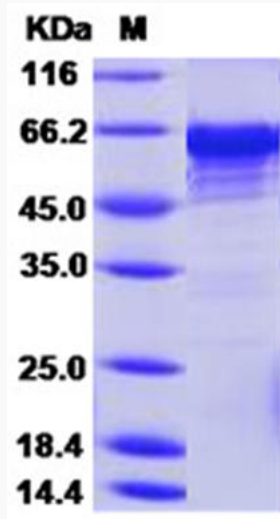
Gene Name	METAP2 methionyl aminopeptidase 2 [Homo sapiens]
Official Symbol	METAP2
Synonyms	METAP2; methionyl aminopeptidase 2; methionine aminopeptidase 2; MAP2; MNPEP; p67; Peptidase M; MAP 2; metAP 2; peptidase M 2; eIF-2-associated p67 homolog; initiation factor 2-associated 67 kDa glycoprotein; p67eIF2;
Gene ID	10988
mRNA Refseq	NM_006838
Protein Refseq	NP_006829
MIM	601870
UniProt ID	P50579

 Tel: 1-631-559-9269 1-516-512-3133

 Email: info@creative-biomart.com  Fax: 1-631-938-8127

 45-1 Ramsey Road, Shirley, NY 11967, USA

SDS-PAGE



 Tel: 1-631-559-9269 1-516-512-3133

 Email: info@creative-biomart.com  Fax: 1-631-938-8127

 45-1 Ramsey Road, Shirley, NY 11967, USA