

Recombinant Human METAP2 Protein (Ala2-Tyr478), N-His tagged

Cat. No. METAP2-3948H Lot. No. (See product label)

SPECIFICATION

Product Overview	Recombinant human METAP2 (Ala2-Tyr478) fused with the N-His tag was expressed in E. coli.
Species	Human
Source	E.coli
ProteinLength	Ala2-Tyr478
Form	Lyophilized powder/frozen liquid
Molecular Mass	55.07 kDa
Purity	>90% as determined by SDS-PAGE.
Notes	For research use only.
Storage	Use a manual defrost freezer and avoid repeated freeze thaw cycles. Store at 2 to 8 centigrade for one week. Store at -20 to -80 centigrade for twelve months from the date of receipt.
Storage Buffer	0.01M PBS, pH 7.4, 0.02% NLS
Reconstitution	Reconstitute in sterile water for a stock solution.

 Tel: 1-631-559-9269 1-516-512-3133

 Email: info@creative-biomart.com  Fax: 1-631-938-8127

 45-1 Ramsey Road, Shirley, NY 11967, USA

Shipping They are shipped out with dry ice/blue ice unless customers require otherwise.

GENE INFORMATION

Gene Name METAP2 methionyl aminopeptidase 2 [Homo sapiens (human)]

Official Symbol METAP2

Synonyms METAP2; methionyl aminopeptidase 2; methionine aminopeptidase 2; MAP2; MNPEP; p67; Peptidase M; MAP 2; metAP 2; peptidase M 2; eIF-2-associated p67 homolog; initiation factor 2-associated 67 kDa glycoprotein; p67eIF2;

Gene ID 10988

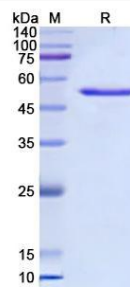
mRNA Refseq NM_006838

Protein Refseq NP_006829

MIM 601870

UniProt ID P50579

SDS-PAGE



 Tel: 1-631-559-9269 1-516-512-3133

 Email: info@creative-biomart.com  Fax: 1-631-938-8127

 45-1 Ramsey Road, Shirley, NY 11967, USA