

Recombinant Human METAP2 Protein, GST-tagged

Cat. No. METAP2-4415H Lot. No. (See product label)

SPECIFICATION

Product Overview	Human METAP2 full-length ORF (NP_006829.1, 1 a.a. - 478 a.a.) recombinant protein with GST-tag at N-terminal.
Species	Human
Source	Wheat Germ
Description	This gene is a member of the methionyl aminopeptidase family and encodes a protein that binds 2 cobalt or manganese ions. This protein functions both by protecting the alpha subunit of eukaryotic initiation factor 2 from inhibitory phosphorylation and by removing the amino-terminal methionine residue from nascent protein. Increased expression of this gene is associated with various forms of cancer and the anti-cancer drugs fumagillin and ovalicin inhibit the protein by irreversibly binding to its active site. A pseudogene of this gene is located on chromosome 2. [provided by RefSeq]
Molecular Mass	79.3 kDa
AA Sequence	MAGVEEVAASGSHLNGDLPDDREEGAASTAEAAKKKRRKKKKSKGPSAAGEQE PDKESGASVDEVARQLERSALEDKERDEDEDGDGDGDGATGKKKKKKKKRGP KVQTDPPSPICDLYPNGVFPKGQECEYPPTQDGRRTAAWRTTSEEKALDQASEEI WNDFREAAEAHRQVRKYVMSWIKPGMTMIEICEKLEDCSRKLIKENGLNAGLAFPT GCSLNNCAAHYTPNAGDTTVLQYDDICKIDFGTHISGRIIDCAFTVTFNPKYDTLLKAV KDATNTGIKCAGIDVRLCDVGEAIQEVMSYEVEIDGKTYQVKPIRNLNGHSIGQYRI HAGKTVPIVKGGATRMEEGEVYAIETFGSTGKGVVHDDMECSHYMKNFVGHVPI

 Tel: 1-631-559-9269 1-516-512-3133

 Email: info@creative-biomart.com  Fax: 1-631-938-8127

 45-1 Ramsey Road, Shirley, NY 11967, USA

RLPRTKHLLNVINENFGTLAFCRRWLDRLGESKYLKALKNLCDLGIVDPYPPLCDIKG
SYTAQFEHTILLRPTCKEVVSRGDDY

Applications	Enzyme-linked Immunoabsorbent Assay Western Blot (Recombinant protein) Antibody Production Protein Array
Notes	Best use within three months from the date of receipt of this protein.
Storage	Store at -80 centigrade. Aliquot to avoid repeated freezing and thawing.
Storage Buffer	50 mM Tris-HCl, 10 mM reduced Glutathione, pH=8.0 in the elution buffer.

GENE INFORMATION

Gene Name	METAP2 methionyl aminopeptidase 2 [Homo sapiens]
Official Symbol	METAP2
Synonyms	METAP2; methionyl aminopeptidase 2; methionine aminopeptidase 2; MAP2; MNPEP; p67; Peptidase M; MAP 2; metAP 2; peptidase M 2; eIF-2-associated p67 homolog; initiation factor 2-associated 67 kDa glycoprotein; p67eIF2;
Gene ID	10988
mRNA Refseq	NM_006838
Protein Refseq	NP_006829
MIM	601870

 Tel: 1-631-559-9269 1-516-512-3133

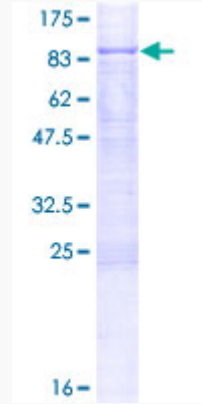
 Email: info@creative-biomart.com  Fax: 1-631-938-8127

 45-1 Ramsey Road, Shirley, NY 11967, USA

UniProt ID

P50579

Quality Control
Testing



12.5% SDS-PAGE Stained with Coomassie Blue

 Tel: 1-631-559-9269 1-516-512-3133

 Email: info@creative-biomart.com  Fax: 1-631-938-8127

 45-1 Ramsey Road, Shirley, NY 11967, USA