

Active Recombinant Human METAP2, His-tagged

Cat. No. METAP2-635H Lot. No. (See product label)

SPECIFICATION

Product Overview	Recombinant Human METAP2 (Ala2-Tyr478) fused with 10His tag at Cterminal, was expressed in Spodoptera frugiperda.
Source	S.frugiperda
ProteinLength	2-478 a.a.
Description	This gene is a member of the methionyl aminopeptidase family and encodes a protein that binds 2 cobalt or manganese ions. This protein functions both by protecting the alpha subunit of eukaryotic initiation factor 2 from inhibitory phosphorylation and by removing the amino-terminal methionine residue from nascent protein. Increased expression of this gene is associated with various forms of cancer and the anti-cancer drugs fumagillin and ovalicin inhibit the protein by irreversibly binding to its active site. A pseudogene of this gene is located on chromosome 2.
Molecular Mass	54 kDa
N-terminal SequenceAnalysis	Ala2
Formulation	Supplied as a 0.2 µ filtered solution in Tris, NaCl and Glycerol.
Purity	>90%, by SDS-PAGE under reducing conditions and visualized by silver stain.
Activity	Measure by its ability to remove methionine from a fluorogenic peptide substrate H-

 Tel: 1-631-559-9269 1-516-512-3133

 Email: info@creative-biomart.com  Fax: 1-631-938-8127

 45-1 Ramsey Road, Shirley, NY 11967, USA

Met-Gly-Pro-AMC. The resulting GP-AMC is cleaved by Recombinant Human DPPiV/CD26. The specific activity is >15 pmol/min/g, as measured using the described conditions.

EndotoxinLevel	<1.0 EU per 1 µg of the protein by the LAL method.
Storage	6 months from date of receipt, 70 °C as supplied. Avoid repeated freezethaw cycles.
OfficialSymbol	METAP2

GENE INFORMATION

Gene Name	METAP2 methionyl aminopeptidase 2 [Homo sapiens]
Synonyms	METAP2; methionyl aminopeptidase 2; MAP 2; Peptidase M; eIF-2-associated p67 homolog; initiation factor 2-associated 67 kDa glycoprotein; metAP 2; methionine aminopeptidase 2; peptidase M 2; p67; MAP2; MNPEP; p67eIF2; EC 3.4.11.18
Gene ID	10988
mRNA Refseq	NM_006838
Protein Refseq	NP_006829
MIM	601870
UniProt ID	P50579
Chromosome Location	12q22

 Tel: 1-631-559-9269 1-516-512-3133

 Email: info@creative-biomart.com  Fax: 1-631-938-8127

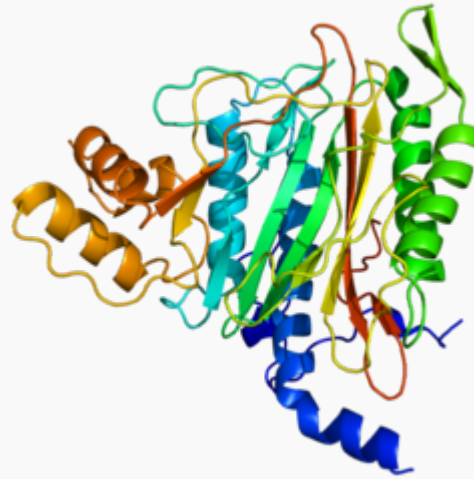
 45-1 Ramsey Road, Shirley, NY 11967, USA



Function

aminopeptidase activity; metal ion binding; metalloexopeptidase activity

**PDB rendering
based on 1b59.**



☎ Tel: 1-631-559-9269 1-516-512-3133

☎ Email: info@creative-biomart.com ☎ Fax: 1-631-938-8127

☎ 45-1 Ramsey Road, Shirley, NY 11967, USA