

# Recombinant Human METRNL Protein (46-311 aa), His-tagged

Cat. No. METRNL-1675H Lot. No. (See product label)

## SPECIFICATION

**Product Overview** Recombinant Human METRNL Protein (46-311 aa) is produced by Yeast expression system. This protein is fused with a 6xHis tag at the N-terminal. Research Area: Cell Biology. Protein Description: Full Length of Mature Protein.

**Species** Human

**Source** Yeast

**ProteinLength** 46-311 aa

**Description** Hormone induced following exercise or cold exposure that promotes energy expenditure. Induced either in the skeletal muscle after exercise or in adipose tissue following cold exposure and is present in the circulation. Able to stimulate energy expenditure associated with the browning of the white fat depots and improves glucose tolerance. Does not promote an increase in a thermogenic gene program via direct action on adipocytes, but acts by stimulating several immune cell subtypes to enter the adipose tissue and activate their prothermogenic actions. Stimulates an eosinophil-dependent increase in IL4 expression and promotes alternative activation of adipose tissue macrophages, which are required for the increased expression of the thermogenic and anti-inflammatory gene programs in fat. Required for some cold-induced thermogenic responses, suggesting a role in metabolic adaptations to cold temperatures.

**Form** Tris-based buffer, 50% glycerol

 Tel: 1-631-559-9269 1-516-512-3133

 Email: [info@creative-biomart.com](mailto:info@creative-biomart.com)  Fax: 1-631-938-8127

 45-1 Ramsey Road, Shirley, NY 11967, USA

<b>Molecular Mass</b>	32.0 kDa
<b>AA Sequence</b>	QYSSDRCSWKGSGLTHEAHRKEVEQVYLCAAGAVEWMYPTGALIVNLRPNTFSP ARHLTVCIRSFTDSSGANIYLEKTGELRLLVPDGDGRPGRVQCFCGLEQGGLFVEATP QQDIGRRTTGQYELVRRHRASDLHELAPCRPCSDTEVLLAVCTSDFAVRGSIQQ VTHEPERQDSAIHLRVSRLYRQKSRVFEVPEGDGHWQGRVRTLLECGVRPGHGD FLFTGHMHFGEARLGCAPRFKDFQRMRYDAQERGLNPCEVGTD
<b>Purity</b>	> 90% as determined by SDS-PAGE.
<b>Notes</b>	Repeated freezing and thawing is not recommended. Store working aliquots at 4 centigrade for up to one week.
<b>Storage</b>	The shelf life is related to many factors, storage state, buffer ingredients, storage temperature and the stability of the protein itself. Generally, the shelf life of liquid form is 6 months at -20 centigrade/-80 centigrade. The shelf life of lyophilized form is 12 months at -20 centigrade/-80 centigrade.
<b>Concentration</b>	A hardcopy of COA with reconstitution instruction is sent along with the products.

## GENE INFORMATION

<b>Gene Name</b>	METRNL meteorin, glial cell differentiation regulator-like [ Homo sapiens ]
<b>Official Symbol</b>	METRNL
<b>Synonyms</b>	METRNL; Subfatin;
<b>Gene ID</b>	284207
<b>mRNA Refseq</b>	NM_001004431.1

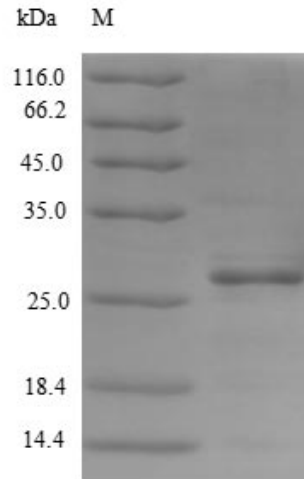
 Tel: 1-631-559-9269 1-516-512-3133

 Email: [info@creative-biomart.com](mailto:info@creative-biomart.com)  Fax: 1-631-938-8127

 45-1 Ramsey Road, Shirley, NY 11967, USA

Protein Refseq NP\_001004431.1

UniProt ID Q641Q3



(Tris-Glycine gel) Discontinuous SDS-PAGE (reduced) with 5% enrichment gel and 15% separation gel.

Tel: 1-631-559-9269 1-516-512-3133

Email: [info@creative-biomart.com](mailto:info@creative-biomart.com) Fax: 1-631-938-8127

45-1 Ramsey Road, Shirley, NY 11967, USA