

# Recombinant Human METTL14 protein (Full Length), N-FLAG-tagged

Cat. No. METTL14-33H Lot. No. (See product label)

## SPECIFICATION

<b>Product Overview</b>	Recombinant METTL14 protein was expressed in a Baculovirus expression system as the full length protein (accession number NP_066012.1) with an N-terminal FLAG-Tag.
<b>Species</b>	Human
<b>Source</b>	Insect Cells
<b>ProteinLength</b>	Full Length
<b>Description</b>	<p>N6-methylated adenine (m6A) is prevalently present in nearly all RNA types and can be found in all organisms from bacteria to humans. It preferentially appears around stop codons and within long internal exons in mammalian messenger RNAs. m6A plays an important role in the efficiency of mRNA splicing, processing, translation efficiency, editing and mRNA stability. m6A also takes place in other RNA molecules, such as primary miRNA (pri-miRNAs).</p> <p>METTL14 (methyltransferase-like 14) forms a stable N6-methyltransferase heterodimer complex with METTL3, which catalyzes the generation of m6A modification on mammalian nuclear RNAs. METTL3 is the catalytically active subunit, while METTL14 plays a structural role critical for substrate recognition.</p>
<b>Molecular Mass</b>	53.3 kDa
<b>Purity</b>	>75%

 Tel: 1-631-559-9269 1-516-512-3133

 Email: [info@creative-biomart.com](mailto:info@creative-biomart.com)  Fax: 1-631-938-8127

 45-1 Ramsey Road, Shirley, NY 11967, USA

**Storage**

Recombinant proteins in solution are temperature sensitive and must be stored at -80 centigrade to prevent degradation. Avoid repeated freeze/thaw cycles and keep on ice when not in storage.

**GENE INFORMATION****Gene Name**

METTL14 methyltransferase 14, N6-adenosine-methyltransferase subunit [ Homo sapiens (human) ]

**Official Symbol**

METTL14

**Synonyms**

METTL14; methyltransferase 14, N6-adenosine-methyltransferase subunit; hMETTL14

**Gene ID**

57721

**mRNA Refseq**

NM\_020961

**Protein Refseq**

NP\_066012

**MIM**

616504

**UniProt ID**

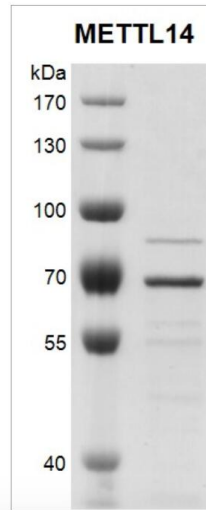
Q9HCE5

 Tel: 1-631-559-9269 1-516-512-3133

 Email: [info@creative-biomart.com](mailto:info@creative-biomart.com)  Fax: 1-631-938-8127

 45-1 Ramsey Road, Shirley, NY 11967, USA

**SDS-PAGE**



 Tel: 1-631-559-9269 1-516-512-3133

 Email: [info@creative-biomart.com](mailto:info@creative-biomart.com)  Fax: 1-631-938-8127

 45-1 Ramsey Road, Shirley, NY 11967, USA