

Recombinant Human METTL14 Protein (Full length), N-GST tagged

Cat. No. METTL14-3785H **Lot. No.** (See product label)

SPECIFICATION

Product Overview	Recombinant human METTL14 (full length) fused with the N-GST tag was expressed in E. coli.
Species	Human
Source	E.coli
ProteinLength	Full length
Description	Enables mRNA binding activity. Contributes to mRNA (2'-O-methyladenosine-N6-) - methyltransferase activity. Involved in mRNA metabolic process; negative regulation of hematopoietic progenitor cell differentiation; and positive regulation of translation. Located in nucleoplasm. Part of RNA N6-methyladenosine methyltransferase complex.
Form	Lyophilized powder/frozen liquid
Molecular Mass	78.97 kDa
Purity	>90% as determined by SDS-PAGE.
Notes	For research use only.
Storage	Use a manual defrost freezer and avoid repeated freeze thaw cycles. Store at 2 to 8

 Tel: 1-631-559-9269 1-516-512-3133

 Email: info@creative-biomart.com  Fax: 1-631-938-8127

 45-1 Ramsey Road, Shirley, NY 11967, USA

centigrade for one week. Store at -20 to -80 centigrade for twelve months from the date of receipt.

Storage Buffer Supplied as solution form in PBS or lyophilized from PBS.

Reconstitution Reconstitute in sterile water for a stock solution.

Shipping They are shipped out with dry ice/blue ice unless customers require otherwise.

GENE INFORMATION

Gene Name [METTL14 methyltransferase 14, N6-adenosine-methyltransferase subunit \[Homo sapiens \(human\) \]](#)

Official Symbol [METTL14](#)

Synonyms METTL14; methyltransferase 14, N6-adenosine-methyltransferase subunit; N6-adenosine-methyltransferase non-catalytic subunit; N6-adenosine-methyltransferase subunit METTL14; methyltransferase like 14; methyltransferase-like protein 14; EC 2.1.1.62

Gene ID [57721](#)

mRNA Refseq [NM_020961](#)

Protein Refseq [NP_066012](#)

MIM [616504](#)

UniProt ID [Q9HCE5](#)

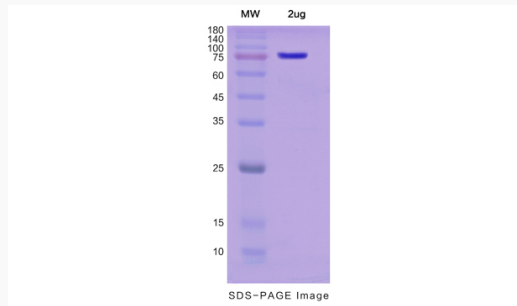
 Tel: 1-631-559-9269 1-516-512-3133

 Email: info@creative-biomart.com  Fax: 1-631-938-8127

 45-1 Ramsey Road, Shirley, NY 11967, USA



SDS-PAGE



Tel: 1-631-559-9269 1-516-512-3133

Email: info@creative-biomart.com Fax: 1-631-938-8127

45-1 Ramsey Road, Shirley, NY 11967, USA