

Recombinant Human METTL14 Protein, Myc/DDK-tagged, C13 and N15-labeled

Cat. No. METTL14-6626H **Lot. No.** (See product label)

SPECIFICATION

Product Overview	METTL14 MS Standard C13 and N15-labeled recombinant protein (NP_066012) with a C-terminal MYC/DDK tag, was expressed in HEK293 cells.
Species	Human
Source	HEK293
Description	METTL14 (Methyltransferase Like 14) is a Protein Coding gene. Diseases associated with METTL14 include Miyoshi Muscular Dystrophy 3 and Periosteal Chondrosarcoma. Among its related pathways are Chromatin Regulation / Acetylation and Gene Expression. Gene Ontology (GO) annotations related to this gene include RNA binding and mRNA (2'-O-methyladenosine-N6-)-methyltransferase activity.
Molecular Mass	52.2 kDa
AA Sequence	MDSRLQEIRERQKLRRQLLAQQLGAESADSIGAVLNSKDEQREIAETRETCRASYDT SAPNAKRKYLDEGETDEDKMEEYKDELEMQQDEENLPYEEIYKDSSTFLKGTQSL NPHNDYCQHFVDTGHRPQNFIRDVGLADRFEYYPKLRRELIRLKDELIAKSNTPPMYL QADIEAFDIRELTPKFDVILPEEYRETGITANEKCWTWDDIMKLEIDEIAAPRSF IFLWCGSGEGLDLGRVCLRWGYRRCEDICWIKTNKNNPGKTKTLDPKAVFQRTKE HCLMGIKGTVKRSTDGDFIHANVDIDLIIITEEPEIGNIEKPVEIFHIIHFCLGRRRLHLF GRDSTIRPGWLTVGPTLTNSNYNAETYASYFSAPNSYLTGCTEEIERLRPKSPPPKS KSDRGGGAPRGGGRGGTSAGRGRERNRSNFRGERGGFRGGRGGAHRRGGFPPR

 Tel: 1-631-559-9269 1-516-512-3133

 Email: info@creative-biomart.com  Fax: 1-631-938-8127

 45-1 Ramsey Road, Shirley, NY 11967, USA



TRTRPLEQKLISEEDLAANDILDYKDDDDKV

Purity > 80% as determined by SDS-PAGE and Coomassie blue staining

Stability Stable for 3 months from receipt of products under proper storage and handling conditions.

Storage Store at -80 centigrade. Avoid repeated freeze-thaw cycles.

Concentration 50 µg/mL as determined by BCA

Storage Buffer 100 mM glycine, 25 mM Tris-HCl, pH 7.3.

GENE INFORMATION

Gene Name METTL14 methyltransferase like 14 [Homo sapiens (human)]

Official Symbol METTL14

Synonyms METTL14; methyltransferase like 14; hMETTL14; N6-adenosine-methyltransferase non-catalytic subunit; N6-adenosine-methyltransferase subunit METTL14; methyltransferase-like protein 14; EC 2.1.1.62

Gene ID 57721

mRNA Refseq NM_020961

Protein Refseq NP_066012

MIM 616504

Tel: 1-631-559-9269 1-516-512-3133

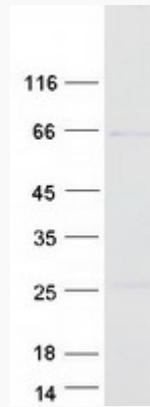
Email: info@creative-biomart.com Fax: 1-631-938-8127

45-1 Ramsey Road, Shirley, NY 11967, USA

UniProt ID

Q9HCE5

SDS-PAGE



 Tel: 1-631-559-9269 1-516-512-3133

 Email: info@creative-biomart.com  Fax: 1-631-938-8127

 45-1 Ramsey Road, Shirley, NY 11967, USA