

Recombinant Full Length Human METTL14 Protein, C-Flag-tagged

Cat. No. METTL14-925HFL Lot. No. (See product label)

SPECIFICATION

Product Overview	Recombinant Full Length Human METTL14 Protein, fused to Flag-tag at C-terminus, was expressed in Mammalian cells.
Species	Human
Source	Mammalian Cells
Description	Enables mRNA binding activity. Contributes to mRNA (2'-O-methyladenosine-N6-)-methyltransferase activity. Involved in mRNA metabolic process; negative regulation of hematopoietic progenitor cell differentiation; and positive regulation of translation. Located in nucleoplasm. Part of RNA N6-methyladenosine methyltransferase complex.
Form	25 mM Tris HCl, pH 7.3, 100 mM glycine, 10% glycerol.
Molecular Mass	52 kDa
AA Sequence	MDSRLQEIRERQKLRRQLLAQQLGAESADSIGAVLNSKDEQREIAETRETCRASYDT SAPNAKRKYLDEG ETDEDKMEEYKDELEMQQDEENLPYEEIYKDSSTFLKGTQSL NPHNDYCQHFVDTGHRPQNFIRDVGLA DRFEEYPKLRELIRLKDDELIAKSNTPPMYL QADIEAFDIRELTPKFDVILPEPPLEYYRETGITANEKC WTWDDIMKLEIDEIAAPRS FIFLWCGSGEGLDLGRVCLRWGYRRCEDICWIKTNKNNPGKTKTLDPKAV FQRTK EHCLMGIKGTVKRSTDGDFIHANVDIDLITTEEPEIGNIEKPVEIFHIIHFCLGRRRLHL FGRD STIRPGWLTVGPTLTNSNYNAETYASYFSAPNSYLTGCTEEIERLRPKSPPPK SKSDRGGGAPRGGGRGG

 Tel: 1-631-559-9269 1-516-512-3133

 Email: info@creative-biomart.com  Fax: 1-631-938-8127

 45-1 Ramsey Road, Shirley, NY 11967, USA

TSAGRGRERNRSNFRGERGGFRGGRGGGAHRGGFPPRTRTRPLEQKLISEEDLAAN
DILDYKDDDDKV

Purity > 80% as determined by SDS-PAGE and Coomassie blue staining.

Stability Stable for 12 months from the date of receipt of the product under proper storage and handling conditions. Avoid repeated freeze-thaw cycles.

Storage Store at -80 centigrade.

Concentration >50 ug/mL as determined by microplate BCA method.

Preparation Recombinant protein was captured through anti-DDK affinity column followed by conventional chromatography steps.

Full Length Full L.

GENE INFORMATION

Gene Name [METTL14 methyltransferase 14, N6-adenosine-methyltransferase subunit \[Homo sapiens \(human\) \]](#)

Official Symbol [METTL14](#)

Synonyms hMETTL14

Gene ID [57721](#)

mRNA Refseq [NM_020961.4](#)

Protein Refseq [NP_066012.1](#)

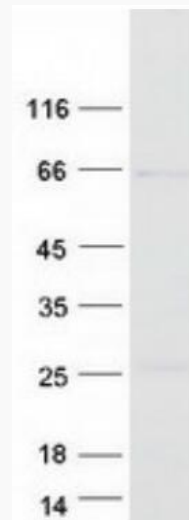
 Tel: 1-631-559-9269 1-516-512-3133

 Email: info@creative-biomart.com  Fax: 1-631-938-8127

 45-1 Ramsey Road, Shirley, NY 11967, USA

MIM 616504

UniProt ID Q9HCE5



Coomassie blue staining of purified METTL14 protein.

 Tel: 1-631-559-9269 1-516-512-3133

 Email: info@creative-biomart.com  Fax: 1-631-938-8127

 45-1 Ramsey Road, Shirley, NY 11967, USA