

Recombinant Human METTL15 protein, His-tagged

Cat. No. METTL15-943H Lot. No. (See product label)

SPECIFICATION

Product Overview	Recombinant Human METTL15 protein(35-200 aa), fused with N-terminal His tag, was expressed in E.coli.
Species	Human
Source	E.coli
ProteinLength	35-200 aa
Form	The purified protein was Lyophilized from sterile PBS (58mM Na ₂ HPO ₄ , 17mM NaH ₂ PO ₄ , 68mM NaCl, pH7.4). 5 % trehalose and 5 % mannitol are added as protectant before lyophilization. The elution buffer contain 300mM imidazole.
AASequence	TTAEKYREYEAREQTDQTQAQELHRSQDRDFETMAKLHIPVMVDEVVHCLSPQKG QIFLDMTFGSGGHTKAILQKESDIVLYALDRDPTAYALAEHLSELYPKQIRAMLGQFS QAEALLMKAGVQPGTFDGLMDLGCSSMQLDTPERGFSLRKDGSLDMRMDGGR
Purity	85%, by SDS-PAGE with Coomassie Brilliant Blue staining.
Storage	Store at 2-8°C for 1-2 weeks. Aliquot and store at -20°C to -80°C for up to 3 months, reconstitution with sterile water and addition of an equal volume of glycerol. Avoid repeat freeze-thaw cycles.
Reconstitution	Dissolve the product in 200 µl sterile water to achieve a working concentration of 0.25 g/µl. If experimental compatibility allows, mix the aqueous solution with an equal

 Tel: 1-631-559-9269 1-516-512-3133

 Email: info@creative-biomart.com  Fax: 1-631-938-8127

 45-1 Ramsey Road, Shirley, NY 11967, USA

volume of glycerol (1:1 ratio) after initial reconstitution.

GENE INFORMATION

Gene Name METTL15 methyltransferase like 15 [Homo sapiens]

Official Symbol METTL15

Synonyms METTL15; methyltransferase like 15; methyltransferase 5 domain containing 1 , METT5D1; probable methyltransferase-like protein 15; FLJ33979; methyltransferase 5 domain containing 1; methyltransferase 5 domain-containing protein 1; probable S-adenosyl-L-methionine-dependent methyltransferase METT5D1; putative S-adenosyl-L-methionine-dependent methyltransferase METT5D1; METT5D1;

Gene ID 196074

mRNA Refseq NM_001113528

Protein Refseq NP_001107000

UniProt ID A6NJ78

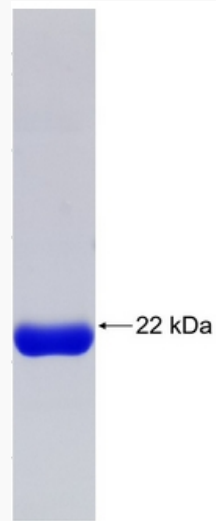
 Tel: 1-631-559-9269 1-516-512-3133

 Email: info@creative-biomart.com  Fax: 1-631-938-8127

 45-1 Ramsey Road, Shirley, NY 11967, USA



SDS-PAGE



Tel: 1-631-559-9269 1-516-512-3133

Email: info@creative-biomart.com Fax: 1-631-938-8127

45-1 Ramsey Road, Shirley, NY 11967, USA