

## Recombinant Human METTL16 Protein, GST-tagged

Cat. No. METTL16-042H Lot. No. (See product label)

### SPECIFICATION

<b>Product Overview</b>	Recombinant full-length human METTL16 was expressed by baculovirus in Sf9 insect cells using an N-terminal GST tag.
<b>Species</b>	Human
<b>Source</b>	Insect Cells
<b>Description</b>	RNA N6-methyltransferase that methylates adenosine residues at the N6 position of a subset of RNAs and is involved in S-adenosyl-L-methionine homeostasis by regulating expression of MAT2A transcripts.
<b>Molecular Mass</b>	~98 kDa
<b>Purity</b>	> 90%
<b>Applications</b>	Activity Assay
<b>Stability</b>	One year at -70 centigrade from date of shipment.
<b>Storage</b>	Store product at -70 centigrade. For optimal storage, aliquot targets into smaller quantities after centrifugation and store at recommended temperature. For most favorable performance, avoid repeated handling and multiple freeze/thaw cycles.
<b>Concentration</b>	0.1 µg/µL

 Tel: 1-631-559-9269 1-516-512-3133

 Email: [info@creative-biomart.com](mailto:info@creative-biomart.com)  Fax: 1-631-938-8127

 45-1 Ramsey Road, Shirley, NY 11967, USA

**Storage Buffer** Recombinant protein stored in 50 mM Tris-HCl, pH 7.5, 150 mM NaCl, 10 mM Glutathione, 0.1 mM EDTA, 0.25 mM DTT, 0.1 mM PMSF, 25% glycerol.

## GENE INFORMATION

**Gene Name** METTL16 methyltransferase 16, N6-methyladenosine [ Homo sapiens (human) ]

**Official Symbol** METTL16

**Synonyms** METTL16; methyltransferase 16, N6-methyladenosine; METT10D; RNA N6-adenosine-methyltransferase METTL16; N6-adenosine-methyltransferase METTL16; U6 small nuclear RNA (adenine-(43)-N(6))-methyltransferase; U6 snRNA methyltransferase; methyltransferase 10 domain containing; methyltransferase 10 domain-containing protein; methyltransferase like 16; methyltransferase-like protein 16; putative methyltransferase METT10D; EC 2.1.1.346; EC 2.1.1.348

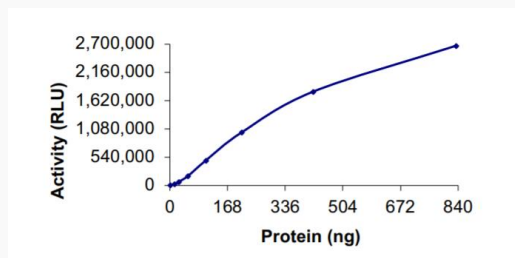
**Gene ID** 79066

**mRNA Refseq** NM\_024086

**Protein Refseq** NP\_076991

**UniProt ID** Q86W50

### Specific Activity



Tel: 1-631-559-9269 1-516-512-3133

Email: [info@creative-biomart.com](mailto:info@creative-biomart.com) Fax: 1-631-938-8127

45-1 Ramsey Road, Shirley, NY 11967, USA



The specific activity of METTL16 was determined to be 1.2 nmol/min/mg as per activity assay protocol.

**Purity**

The purity was determined to be >90% by densitometry, approx. MW ~98 kDa.

 Tel: 1-631-559-9269 1-516-512-3133

 Email: [info@creative-biomart.com](mailto:info@creative-biomart.com)  Fax: 1-631-938-8127

 45-1 Ramsey Road, Shirley, NY 11967, USA