

Recombinant Full Length Human METTL16 Protein, C-Flag-tagged

Cat. No. METTL16-1104HFL **Lot. No.** (See product label)

SPECIFICATION

Product Overview	Recombinant Full Length Human METTL16 Protein, fused to Flag-tag at C-terminus, was expressed in Mammalian cells.
Species	Human
Source	Mammalian Cells
Description	Enables RNA binding activity and RNA methyltransferase activity. Involved in RNA modification and regulation of mRNA metabolic process. Located in cytoplasm and nucleus.
Form	25 mM Tris HCl, pH 7.3, 100 mM glycine, 10% glycerol.
Molecular Mass	63.4 kDa
AA Sequence	<p>MALSKSMHARNRYKDKPPDFAYLASKYPDFKQHVQINLNGRVSLNFKDPEAVRALT CTLLREDFGLSIDI PLERLIPTVPLRLNYIHWVEDLIGHQSDKSTLRRGIDIGTGASCI YPLLGATLNGWYFLATEVDDMCFN YAKKNVEQNNLSDLIKVVKVPQKTLMDALKE ESEIIYDFCMCNPPFFANQLEAKGVNSRNPRRPPSSV NTGGITEIMAEGGELEFVK RIIHDSLQLKKRLRWYSCMLGKKCSLAPLKEELRIQGVPKVTYTEFCQGRT MRWAL AWSFYDDVTVSPPSKRRKLEKPRKPITFVVLASVMKELSLKASPLRSETAEGIVVVT TWIEKIL TDLKVQHKRVPCGKEEVSLFLTAIENSWIHLRRKKRERVRQLREVPRAPE DVIQALEEKKPTPKESGNSQ ELARGPQERTPCGPALREGEAAVEGPCPSQESLS QEENPEPTEDERSEEKGGVEVLENCQGSSNGAQDQ EASEQFGSPVAERGKRLPG</p>

 Tel: 1-631-559-9269 1-516-512-3133

 Email: info@creative-biomart.com  Fax: 1-631-938-8127

 45-1 Ramsey Road, Shirley, NY 11967, USA

VAGQYLFKCLINVKKEVDDALVEMHWVEGQNRDLMNQLCTYIRNQIFRLVA
VNTRTRPLEQKLISEEDLAANDILDYKDDDDKV

Purity	> 80% as determined by SDS-PAGE and Coomassie blue staining.
Stability	Stable for 12 months from the date of receipt of the product under proper storage and handling conditions. Avoid repeated freeze-thaw cycles.
Storage	Store at -80 centigrade.
Concentration	>50 ug/mL as determined by microplate BCA method.
Preparation	Recombinant protein was captured through anti-DDK affinity column followed by conventional chromatography steps.
Full Length	Full L.

GENE INFORMATION

Gene Name	METTL16 methyltransferase 16, N6-methyladenosine [Homo sapiens (human)]
Official Symbol	METTL16
Synonyms	METT10D
Gene ID	79066
mRNA Refseq	NM_024086.4
Protein Refseq	NP_076991.3

 Tel: 1-631-559-9269 1-516-512-3133

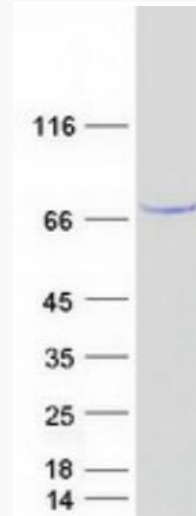
 Email: info@creative-biomart.com  Fax: 1-631-938-8127

 45-1 Ramsey Road, Shirley, NY 11967, USA



UniProt ID

Q86W50



Coomassie blue staining of purified METTL16 protein.

Tel: 1-631-559-9269 1-516-512-3133

Email: info@creative-biomart.com Fax: 1-631-938-8127

45-1 Ramsey Road, Shirley, NY 11967, USA