

Recombinant Human METTL16 Protein, His-tagged

Cat. No. METTL16-13H Lot. No. (See product label)

SPECIFICATION

| | |
|-------------------------|---|
| Product Overview | Recombinant human METTL16 protein (2-562) with a C-terminal His-tag was expressed in E. coli. |
| Species | Human |
| Source | E.coli |
| ProteinLength | 2-562 |
| Description | <p>Methyltransferase-like protein 16 (METTL16) is an m6A RNA methyltransferase encoded by the METTL16 gene in humans. It is composed of a methyltransferase domain that associates with RNA and two vertebrate conserved regions (VCRs) on the C-terminal end that promote splicing. METTL16 acts as an epigenetic writer by methylating the pre-mRNA of the S-adenosylmethionine (SAM) synthetase MAT2A in the presence of SAM. It also methylates the adenine at position 43 of spliceosome component U6 snRNA and interacts with cancer-associated MALAT1 long non-coding RNA (lncRNA). Knockout of Mettl16 in mouse embryos leads to a reduction in Mat2a mRNA expression, transcriptome dysregulation, and lethality at approximately the implantation stage. The expression of METTL16 is increased in isolated human colon, but not rectal, adenocarcinoma tumor tissue, and decreased METTL16 expression in rectal adenocarcinoma tumor tissue is associated with lower overall survival.</p> |
| Form | 50 mM HEPES, pH 8.0, with 150 mM sodium chloride, 10% glycerol |
| Molecular Mass | 64.5 kDa |

 Tel: 1-631-559-9269 1-516-512-3133

 Email: info@creative-biomart.com  Fax: 1-631-938-8127

 45-1 Ramsey Road, Shirley, NY 11967, USA

| | |
|---------------------|----------------------------|
| Purity | ≥90% estimated by SDS-PAGE |
| Applications | WB, ELISA |
| Stability | ≥ 1 year |
| Storage | Store at -80 centigrade |

GENE INFORMATION

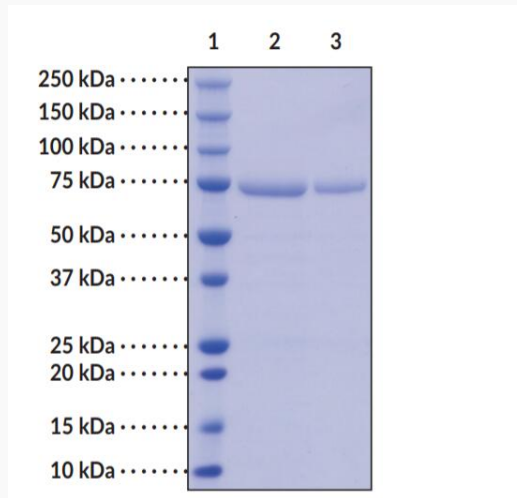
| | |
|------------------------|--|
| Gene Name | METTL16 methyltransferase like 16 [Homo sapiens (human)] |
| Official Symbol | METTL16 |
| Synonyms | METTL16; methyltransferase like 16; METT10D; RNA N6-adenosine-methyltransferase METTL16; N6-adenosine-methyltransferase METTL16; U6 small nuclear RNA (adenine-(43)-N(6))-methyltransferase; U6 snRNA methyltransferase; methyltransferase 10 domain containing; methyltransferase 10 domain-containing protein; methyltransferase-like protein 16; putative methyltransferase METT10D |
| Gene ID | 79066 |
| mRNA Refseq | NM_024086 |
| Protein Refseq | NP_076991 |
| UniProt ID | Q86W50 |

 Tel: 1-631-559-9269 1-516-512-3133

 Email: info@creative-biomart.com  Fax: 1-631-938-8127

 45-1 Ramsey Road, Shirley, NY 11967, USA

**SDS-PAGE of
METTL16**



Lane 1: MW Markers, Lane 2: METTL16 (4 g), Lane 3: METTL16 (2 g).
Representative gel image shown; actual purity may vary between each batch.

 Tel: 1-631-559-9269 1-516-512-3133

 Email: info@creative-biomart.com  Fax: 1-631-938-8127

 45-1 Ramsey Road, Shirley, NY 11967, USA