

Recombinant Active Human METTL16 Protein, GST-tagged

Cat. No. METTL16-609H Lot. No. (See product label)

SPECIFICATION

Product Overview	Recombinant full-length human METTL16 was expressed by baculovirus in Sf9 insect cells using an N-terminal GST tag.
Species	Human
Source	Insect Cells
Description	RNA N6-methyltransferase that methylates adenosine residues at the N6 position of a subset of RNAs and is involved in S-adenosyl-L-methionine homeostasis by regulating expression of MAT2A transcripts.
Molecular Mass	~98 kDa
Purity	>90 %
Stability	One year at -70 centigrade from date of shipment.
Storage	Store product at -70 centigrade. For optimal storage, aliquot targets into smaller quantities after centrifugation and store at the recommended temperature. For most favorable performance, avoid repeated handling and multiple freeze/thaw cycles.
Concentration	0.1 µg/µL
Storage Buffer	Recombinant protein stored in 50mM Tris-HCl, pH 7.5, 150mM NaCl, 10mM glutathione, 0.1mM EDTA, 0.25mM DTT, 0.1mM PMSF, 25% glycerol.

 Tel: 1-631-559-9269 1-516-512-3133

 Email: info@creative-biomart.com  Fax: 1-631-938-8127

 45-1 Ramsey Road, Shirley, NY 11967, USA

Shipping On dry ice.

GENE INFORMATION

Gene Name METTL16 methyltransferase 16, N6-methyladenosine [Homo sapiens (human)]

Official Symbol METTL16

Synonyms METTL16; methyltransferase 16, N6-methyladenosine; METT10D; RNA N6-adenosine-methyltransferase METTL16; N6-adenosine-methyltransferase METTL16; U6 small nuclear RNA (adenine-(43)-N(6))-methyltransferase; U6 snRNA methyltransferase; methyltransferase 10 domain containing; methyltransferase 10 domain-containing protein; methyltransferase like 16; methyltransferase-like protein 16; putative methyltransferase METT10D; EC 2.1.1.346; EC 2.1.1.348

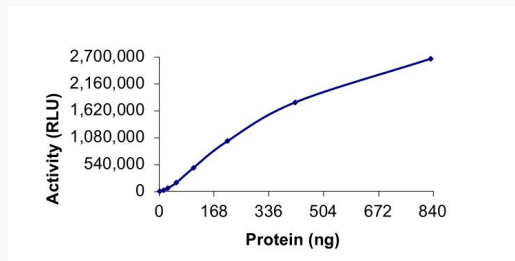
Gene ID 79066

mRNA Refseq NM_024086

Protein Refseq NP_076991

UniProt ID Q86W50

Specific activity



The specific activity of METTL16 was determined to be 1.2 nmol/min/mg as per

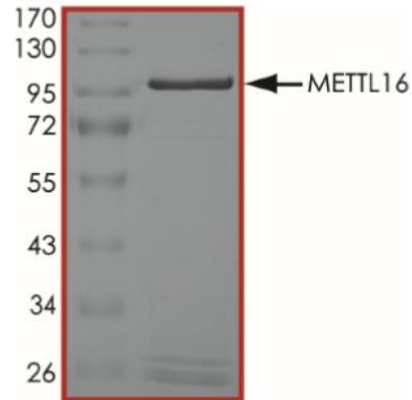
 Tel: 1-631-559-9269 1-516-512-3133

 Email: info@creative-biomart.com  Fax: 1-631-938-8127

 45-1 Ramsey Road, Shirley, NY 11967, USA

activity assay protocol.

Purity



The purity was determined to be >90% by densitometry, approx. MW ~98 kDa.

 Tel: 1-631-559-9269 1-516-512-3133

 Email: info@creative-biomart.com  Fax: 1-631-938-8127

 45-1 Ramsey Road, Shirley, NY 11967, USA