

Recombinant Human METTL18 Protein, Myc/DDK-tagged, C13 and N15-labeled

Cat. No. METTL18-3640H Lot. No. (See product label)

SPECIFICATION

Product Overview	C1orf156 MS Standard C13 and N15-labeled recombinant protein (NP_219486) with a C-terminal MYC/DDK tag, was expressed in HEK293 cells.
Species	Human
Source	HEK293
Description	METTL18 (Methyltransferase Like 18) is a Protein Coding gene. Diseases associated with METTL18 include Combined Oxidative Phosphorylation Deficiency 3 and Transient Global Amnesia. Gene Ontology (GO) annotations related to this gene include methyltransferase activity and protein methyltransferase activity.
Molecular Mass	42.1 kDa
AA Sequence	MTFQFNFTIEDHLENELTPIRDGALTLDSSKELSVSESQKGEERDRKCSAEQFDLPQ DHLWEHKSMENAAPSQDSDSPLSAASSSRNLEPHGKQPSLRAAKEHAMPKDLKKM LENKVIETLPGFQHVKLSVVKTILLKENFPGENIVSKSFSSHSDLITGVYEGGLKIWEC TFDLLAYFTKAKVKFAGKKVLDLGCSSGLLGITAFKGGSKIEHFQDYNMVIDEVTLP NVVANSTLEDEENDVNEPDVKRCRKPVTQLYKCRFFSGEWSEFCKLVLSSEKLFV KYDLILTSETIYNPDYYSNLHQTFRLRLLSKNGRVLLASKAHYFGVGGGVHFLFQKFVEE RDVFKTRILKIIDEGLKRFIIEITFKFPGTRTRPLEQKLISEEDLAANDILDYKDDDDKV
Purity	> 80% as determined by SDS-PAGE and Coomassie blue staining

 Tel: 1-631-559-9269 1-516-512-3133

 Email: info@creative-biomart.com  Fax: 1-631-938-8127

 45-1 Ramsey Road, Shirley, NY 11967, USA

Stability	Stable for 3 months from receipt of products under proper storage and handling conditions.
Storage	Store at -80 centigrade. Avoid repeated freeze-thaw cycles.
Concentration	50 µg/mL as determined by BCA
Storage Buffer	100 mM glycine, 25 mM Tris-HCl, pH 7.3.

GENE INFORMATION

Gene Name	METTL18 methyltransferase like 18 [Homo sapiens (human)]
Official Symbol	METTL18
Synonyms	METTL18; methyltransferase like 18; HPM1; AsTP2; C1orf156; histidine protein methyltransferase 1 homolog; arsenic-transactivated protein 2; methyltransferase-like protein 18
Gene ID	92342
mRNA Refseq	NM_033418
Protein Refseq	NP_219486
MIM	615255
UniProt ID	O95568

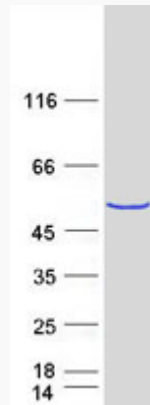
 Tel: 1-631-559-9269 1-516-512-3133

 Email: info@creative-biomart.com  Fax: 1-631-938-8127

 45-1 Ramsey Road, Shirley, NY 11967, USA



SDS-PAGE



Tel: 1-631-559-9269 1-516-512-3133

Email: info@creative-biomart.com Fax: 1-631-938-8127

45-1 Ramsey Road, Shirley, NY 11967, USA