

Recombinant Human METTL21A Protein, GST-tagged

Cat. No. METTL21A-4405H **Lot. No.** (See product label)

SPECIFICATION

Product Overview	Human METTL21A full-length ORF (NP_660323.2, 1 a.a. - 218 a.a.) recombinant protein with GST-tag at N-terminal.
Species	Human
Source	Wheat Germ
Description	METTL21A (Methyltransferase Like 21A) is a Protein Coding gene. Among its related pathways are Metabolism of proteins and Protein methylation. GO annotations related to this gene include methyltransferase activity and Hsp70 protein binding. An important paralog of this gene is EEF1AKMT3.
Molecular Mass	51 kDa
AA Sequence	MALVPYEETTEFGLQKFHKPLATFSFANHTIQIRQDWRHLGVAAVVWDAAILVSTYL EMGAVELRGRSAVELGAGTGLVGIVAALLGAHVTITDRKVALEFLKSNVQANLPPHIQ TKTVVKELTWGQNLGSFSPGEFDLILGADIIYLEETFTDLLQTLHLCSNHSVILLACRI RYERDNNFLAMLERQFIVRKVHYDPEKDVHIYEAQQRNPKEDL
Applications	Enzyme-linked Immunoabsorbent Assay Western Blot (Recombinant protein) Antibody Production Protein Array
Notes	Best use within three months from the date of receipt of this protein.

 Tel: 1-631-559-9269 1-516-512-3133

 Email: info@creative-biomart.com  Fax: 1-631-938-8127

 45-1 Ramsey Road, Shirley, NY 11967, USA

Storage Store at -80 centigrade. Aliquot to avoid repeated freezing and thawing.

Storage Buffer 50 mM Tris-HCl, 10 mM reduced Glutathione, pH=8.0 in the elution buffer.

GENE INFORMATION

Gene Name METTL21A methyltransferase like 21A [Homo sapiens]

Official Symbol METTL21A

Synonyms METTL21A; methyltransferase like 21A; FAM119A, family with sequence similarity 119, member A; methyltransferase-like protein 21A; HCA557b; Hepatocellular carcinoma associated antigen 557b; LOC151194; family with sequence similarity 119, member A; hepatocellular carcinoma-associated antigen 557b; FAM119A; MGC45373;

Gene ID 151194

mRNA Refseq NM_001127395

Protein Refseq NP_001120867

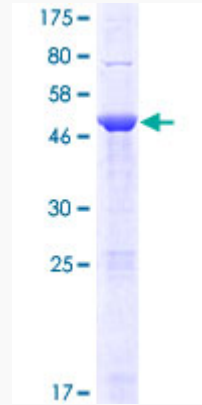
UniProt ID Q8WXB1

 Tel: 1-631-559-9269 1-516-512-3133

 Email: info@creative-biomart.com  Fax: 1-631-938-8127

 45-1 Ramsey Road, Shirley, NY 11967, USA

**Quality Control
Testing**



12.5% SDS-PAGE Stained with Coomassie Blue

 Tel: 1-631-559-9269 1-516-512-3133

 Email: info@creative-biomart.com  Fax: 1-631-938-8127

 45-1 Ramsey Road, Shirley, NY 11967, USA