

Recombinant Human METTL3/METTL14 complex Protein, GST-tagged

Cat. No. METTL3-043H Lot. No. (See product label)

SPECIFICATION

Product Overview	Full-length recombinant human METTL3/METTL14 complex was expressed by baculovirus in Sf9 insect cells using an N-terminal GST tag.
Species	Human
Source	Insect Cells
Description	This gene encodes the 70 kDa subunit of MT-A which is part of N6-adenosine-methyltransferase. This enzyme is involved in the posttranscriptional methylation of internal adenosine residues in eukaryotic mRNAs, forming N6-methyladenosine.
Molecular Mass	100 kDa (METTL3) and 84 kDa (METTL14)
Purity	> 90%
Applications	Activity Assay
Stability	One year at -70 centigrade from date of shipment.
Storage	Store product at -70 centigrade. For optimal storage, aliquot targets into smaller quantities after centrifugation and store at recommended temperature. For most favorable performance, avoid repeated handling and multiple freeze/thaw cycles.
Concentration	0.1 µg/µL

 Tel: 1-631-559-9269 1-516-512-3133

 Email: info@creative-biomart.com  Fax: 1-631-938-8127

 45-1 Ramsey Road, Shirley, NY 11967, USA

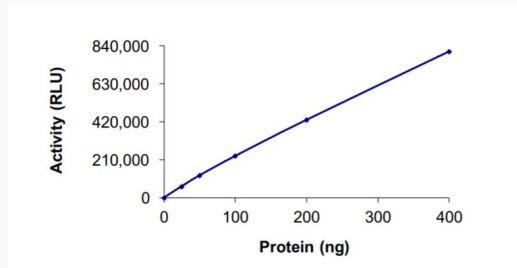
Storage Buffer	Recombinant protein stored in 50 mM Tris-HCl, pH 7.5, 150 mM NaCl, 10 mM Glutathione, 0.1 mM EDTA, 0.25 mM DTT, 0.1 mM PMSF, 25% glycerol.
Shipping	Dry ice
GENE INFORMATION	
Gene Name	METTL3 methyltransferase 3, N6-adenosine-methyltransferase complex catalytic subunit [Homo sapiens (human)]
Official Symbol	METTL3
Synonyms	METTL3; methyltransferase 3, N6-adenosine-methyltransferase complex catalytic subunit; M6A; IME4; Spo8; MT-A70; hMETTL3; N6-adenosine-methyltransferase catalytic subunit; N6-adenosine-methyltransferase 70 kDa subunit; adoMet-binding subunit of the human mRNA (N6-adenosine)-methyltransferase; mRNA (2'-O-methyladenosine-N(6)-)-methyltransferase; mRNA m(6)A methyltransferase; methyltransferase like 3; methyltransferase-like protein 3; EC 2.1.1.348
Gene ID	?term=56339
mRNA Refseq	NM_019852
Protein Refseq	NP_062826
MIM	612472
UniProt ID	Q86U44

 Tel: 1-631-559-9269 1-516-512-3133

 Email: info@creative-biomart.com  Fax: 1-631-938-8127

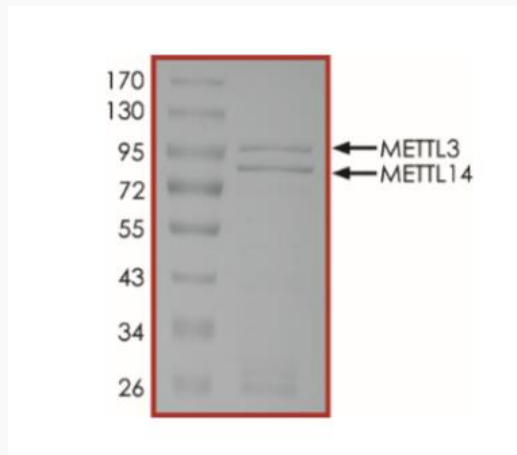
 45-1 Ramsey Road, Shirley, NY 11967, USA

Specific Activity



The specific activity of METTL3/METTL14 was determined to be 750 pmol/min/mg as per activity assay protocol.

Purity



The purity of METTL3/METTL14 complex was determined to be >90% by densitometry, approx. MW 100 kDa (METTL3) and 84 kDa (METTL14).

Tel: 1-631-559-9269 1-516-512-3133

Email: info@creative-biomart.com Fax: 1-631-938-8127

45-1 Ramsey Road, Shirley, NY 11967, USA