

Recombinant Human METTL3 Protein, His-tagged

Cat. No. METTL3-12H Lot. No. (See product label)

SPECIFICATION

Product Overview	Recombinant human METTL3 protein (2-580) with a N-terminal His-tag and recombinant human METTL14(2-456) protein with a N-terminal GST/His-tag were expressed in insect cells.
Species	Human
Source	Insect Cells
ProteinLength	2-580
Description	This gene encodes the 70 kDa subunit of MT-A which is part of N6-adenosine-methyltransferase. This enzyme is involved in the posttranscriptional methylation of internal adenosine residues in eukaryotic mRNAs, forming N6-methyladenosine.
Form	10 mM Tris, with 500 mM sodium chloride, 1 mM DTT, and 5% glycerol
Molecular Mass	66.3 kDa
Purity	≥80% estimated by SDS-PAGE
Applications	WB, ELISA
Stability	≥ 1 year
Storage	Store at -80 centigrade

 Tel: 1-631-559-9269 1-516-512-3133

 Email: info@creative-biomart.com  Fax: 1-631-938-8127

 45-1 Ramsey Road, Shirley, NY 11967, USA

GENE INFORMATION

Gene Name METTL3 methyltransferase like 3 [Homo sapiens (human)]

Official Symbol METTL3

Synonyms METTL3; methyltransferase like 3; M6A; IME4; Spo8; MT-A70; hMETTL3; N6-adenosine-methyltransferase catalytic subunit; N6-adenosine-methyltransferase 70 kDa subunit; adoMet-binding subunit of the human mRNA (N6-adenosine)-methyltransferase; mRNA (2'-O-methyladenosine-N(6)-)-methyltransferase; mRNA m(6)A methyltransferase; methyltransferase-like protein 3

Gene ID 56339

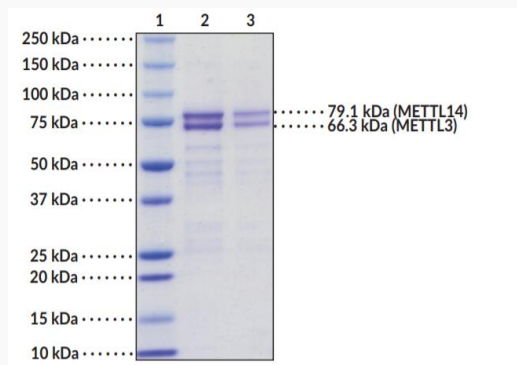
mRNA Refseq NM_019852

Protein Refseq NP_062826

MIM 612472

UniProt ID Q86U44

SDS-PAGE of METTL3/14



Tel: 1-631-559-9269 1-516-512-3133

Email: info@creative-biomart.com Fax: 1-631-938-8127

45-1 Ramsey Road, Shirley, NY 11967, USA



Lane 1: MW Markers, Lane 2: METTL3 and METTL14 (4 g), Lane 3: METTL3 and METTL14 (2 g)

 Tel: 1-631-559-9269 1-516-512-3133

 Email: info@creative-biomart.com  Fax: 1-631-938-8127

 45-1 Ramsey Road, Shirley, NY 11967, USA