

# Recombinant Human METTL3 Protein, Myc/DDK-tagged, C13 and N15-labeled

Cat. No. METTL3-1630H Lot. No. (See product label)

## SPECIFICATION

### Product Overview

METTL3 MS Standard C13 and N15-labeled recombinant protein (NP\_062826) with a C-terminal MYC/DDK tag, was expressed in HEK293 cells.

### Species

Human

### Source

HEK293

### Description

This gene encodes the 70 kDa subunit of MT-A which is part of N6-adenosine-methyltransferase. This enzyme is involved in the posttranscriptional methylation of internal adenosine residues in eukaryotic mRNAs, forming N6-methyladenosine.

### Molecular Mass

64.3 kDa

### AA Sequence

MSDTWSSIQAHKKQLDSLRLRERLQRRRKQDSGHLDLRNPEAALSPTFRSDSPVPTAP  
 TSGGPKPSTASAVPELATDPELEKLLHHLSDLALTLPTDAVSICLAISTPDAPATQD  
 GVESLLQKFAAQELIEVKRGLLQDDAHTLVTYADHSKLSAMMGAVAEEKKGPGEVA  
 GTVTGQKRRAEQDSTTVAFASSLVSGLNSSASEPAKEPAKKSRAKHAASDVDLEIES  
 LLNQQSTKEQQSKKVSQEILELLNTTTAKEQSIVEKFRSRGRAQVQEFCDYGTKEEC  
 MKASDADRPCRKLHFRIINKHTDESLGDCSFLNTCFHMDTCKYVHYEIDACMDSEA  
 PGSKDHTPSQELALTQSVGGDSSADRLFPPQWICCDIRYLDVSILGKFAVVMADPP  
 WDIHMELPYGTLTDEMRRNLNIPVLQDDGFLFLWVTGRAMELGRECLNLWGYERV  
 DEIIWVKTNQLQRIIRTGRTGHWLNHGKEHCLVGVKGNPQGFNQGLDCDVIVAEVR  
 STSHKPDEIYGMIERLSPGTRKIELFGRPHNVQPNWITLGNQLDGIHLLDPDVVARFK

 Tel: 1-631-559-9269 1-516-512-3133

 Email: [info@creative-biomart.com](mailto:info@creative-biomart.com)  Fax: 1-631-938-8127

 45-1 Ramsey Road, Shirley, NY 11967, USA



QRYPDGIISKPKNLTRTRPLEQKLISEEDLAANDILDYKDDDDKV

**Purity** > 80% as determined by SDS-PAGE and Coomassie blue staining

**Stability** Stable for 3 months from receipt of products under proper storage and handling conditions.

**Storage** Store at -80 centigrade. Avoid repeated freeze-thaw cycles.

**Concentration** 50 µg/mL as determined by BCA

**Storage Buffer** 100 mM glycine, 25 mM Tris-HCl, pH 7.3.

## GENE INFORMATION

**Gene Name** METTL3 methyltransferase like 3 [ Homo sapiens (human) ]

**Official Symbol** METTL3

**Synonyms** METTL3; methyltransferase like 3; M6A; IME4; Spo8; MT-A70; hMETTL3; N6-adenosine-methyltransferase catalytic subunit; N6-adenosine-methyltransferase 70 kDa subunit; adoMet-binding subunit of the human mRNA (N6-adenosine)-methyltransferase; mRNA (2'-O-methyladenosine-N(6)-)-methyltransferase; mRNA m(6)A methyltransferase; methyltransferase-like protein 3; EC 2.1.1.348

**Gene ID** 56339

**mRNA Refseq** NM\_019852

**Protein Refseq** NP\_062826

Tel: 1-631-559-9269 1-516-512-3133

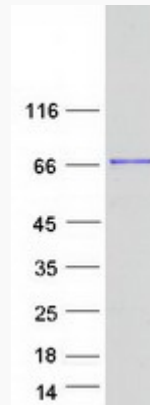
Email: [info@creative-biomart.com](mailto:info@creative-biomart.com) Fax: 1-631-938-8127

45-1 Ramsey Road, Shirley, NY 11967, USA

**MIM** 612472

**UniProt ID** Q86U44

**SDS-PAGE**



 Tel: 1-631-559-9269 1-516-512-3133

 Email: [info@creative-biomart.com](mailto:info@creative-biomart.com)  Fax: 1-631-938-8127

 45-1 Ramsey Road, Shirley, NY 11967, USA