

Recombinant Human METTL3 and METTL14 Protein, His/GST/His-tagged

Cat. No. METTL3-166H Lot. No. (See product label)

SPECIFICATION

Product Overview	Recombinant human N-terminal histidine-tagged METTL3 and recombinant human N-terminal GST-histidine-tagged METTL14 expressed in insect cells.
Species	Human
Source	Insect Cells
ProteinLength	2-580 and 2-456 for METTL3 and METTL14, respectively
Description	This gene encodes the 70 kDa subunit of MT-A which is part of N6-adenosine-methyltransferase. This enzyme is involved in the posttranscriptional methylation of internal adenosine residues in eukaryotic mRNAs, forming N6-methyladenosine.
Molecular Mass	66.3 and 79.1 kDa for METTL3 and METTL14, respectively
Purity	≥80% estimated by SDS-PAGE
Stability	≥ 6 months
Storage	At -80 centigrade.
Storage Buffer	10 mM Tris, with 500 mM sodium chloride, 1 mM DTT, and 5% glycerol

GENE INFORMATION

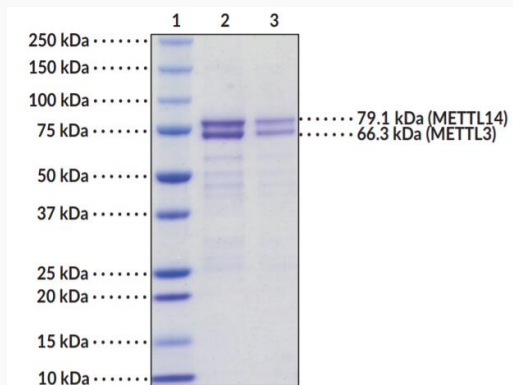
 Tel: 1-631-559-9269 1-516-512-3133

 Email: info@creative-biomart.com  Fax: 1-631-938-8127

 45-1 Ramsey Road, Shirley, NY 11967, USA

Gene Name	METTL3 methyltransferase 3, N6-adenosine-methyltransferase complex catalytic subunit [Homo sapiens (human)]
Official Symbol	METTL3
Synonyms	METTL3; methyltransferase 3, N6-adenosine-methyltransferase complex catalytic subunit; M6A; IME4; Spo8; MT-A70; hMETTL3; N6-adenosine-methyltransferase catalytic subunit; N6-adenosine-methyltransferase 70 kDa subunit; adoMet-binding subunit of the human mRNA (N6-adenosine)-methyltransferase; mRNA (2'-O-methyladenosine-N(6)-)-methyltransferase; mRNA m(6)A methyltransferase; methyltransferase like 3; methyltransferase-like protein 3; EC 2.1.1.348
Gene ID	56339
mRNA Refseq	NM_019852
Protein Refseq	NP_062826
MIM	612472
UniProt ID	Q86U44

**SDS-PAGE Analysis
of METTL3 and
METTL14**



Tel: 1-631-559-9269 1-516-512-3133

Email: info@creative-biomart.com Fax: 1-631-938-8127

45-1 Ramsey Road, Shirley, NY 11967, USA



Lane 1: MW Markers

Lane 2: METTL3 and METTL14 (4µg)

Lane 3: METTL3 and METTL14 (2µg)

 Tel: 1-631-559-9269 1-516-512-3133

 Email: info@creative-biomart.com  Fax: 1-631-938-8127

 45-1 Ramsey Road, Shirley, NY 11967, USA