

Recombinant Human METTL3 Protein (Gln357-Leu580), N-His tagged

Cat. No. METTL3-3781H **Lot. No.** (See product label)

SPECIFICATION

Product Overview	Recombinant human METTL3 (Gln357-Leu580) fused with the N-His tag was expressed in E. coli.
Species	Human
Source	E.coli
ProteinLength	Gln357-Leu580
Description	This gene encodes the 70 kDa subunit of MT-A which is part of N6-adenosine-methyltransferase. This enzyme is involved in the posttranscriptional methylation of internal adenosine residues in eukaryotic mRNAs, forming N6-methyladenosine.
Form	Lyophilized powder/frozen liquid
Molecular Mass	27.88 kDa
Purity	>90% as determined by SDS-PAGE.
Notes	For research use only.
Storage	Use a manual defrost freezer and avoid repeated freeze thaw cycles. Store at 2 to 8 centigrade for one week. Store at -20 to -80 centigrade for twelve months from the date of receipt.

 Tel: 1-631-559-9269 1-516-512-3133

 Email: info@creative-biomart.com  Fax: 1-631-938-8127

 45-1 Ramsey Road, Shirley, NY 11967, USA

Storage Buffer	0.01M PBS, pH 7.4, 0.02% NLS
Reconstitution	Reconstitute in sterile water for a stock solution.
Shipping	They are shipped out with dry ice/blue ice unless customers require otherwise.

GENE INFORMATION

Gene Name	METTL3 methyltransferase 3, N6-adenosine-methyltransferase complex catalytic subunit [Homo sapiens (human)]
Official Symbol	METTL3
Synonyms	METTL3; methyltransferase 3, N6-adenosine-methyltransferase complex catalytic subunit; M6A; IME4; Spo8; MT-A70; hMETTL3;
Gene ID	56339
mRNA Refseq	NM_019852
Protein Refseq	NP_062826
MIM	612472
UniProt ID	Q86U44

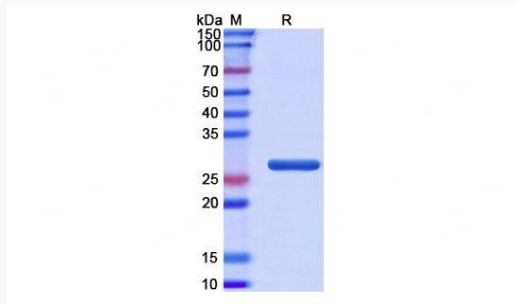
 Tel: 1-631-559-9269 1-516-512-3133

 Email: info@creative-biomart.com  Fax: 1-631-938-8127

 45-1 Ramsey Road, Shirley, NY 11967, USA



SDS-PAGE



Tel: 1-631-559-9269 1-516-512-3133

Email: info@creative-biomart.com Fax: 1-631-938-8127

45-1 Ramsey Road, Shirley, NY 11967, USA