

Recombinant Human METTL3 Protein

Cat. No. METTL3-43H Lot. No. (See product label)

SPECIFICATION

Product Overview Recombinant Human METTL3 Protein was expressed in E. coli.

Species Human

Source E.coli

Description This gene encodes the 70 kDa subunit of MT-A which is part of N6-adenosine-methyl transferase. This enzyme is involved in the posttranscriptional methylation of internal adenosine residues in eukaryotic mRNAs, forming N6-methyladenosine.

Form Liquid. In Sterile PBS (58mM Na₂HPO₄, 17mM NaH₂PO₄, 68mM NaCl, pH7.4).

Molecular Mass ~64.4 kDa

AA Sequence

```

MSDTWSSIAHKKQLDSLRLRERLQRRRKQDSGHLDLRNPEAALSPTFRSDSPVPTAP
TSGGPKPSTASAVPELATDPELEKLLHHLSDLALTLPTDAVSICLAISTPDAPATQD
GVESLLQKFAAQELIEVKRGLLQDDAHPTLVTYADHSKLSAMMGAVAEEKKGPGEVA
GTVTGQKRRAEQDSTTVAAFASSLVSGLNSSASEPAKEPAKKSARKHAASDVDLEIES
LLNQQSTKEQQSKKVSQEILELLNTTTAKEQSIVEKFRSRGRAQVQEFCDYGTKEEC
MKASDADRPCRKLHFRIINKHTDESLGDCSFLNTCFHMDTCKYVHYEIDACMDSEA
PGSKDHTPSQELALTQSVGGDSSADRLFPPQWICCDIRYLDVSILGKFAVVMAPP
WDIHMELPYGTLTDDMRRNLNIPVLQDDGFLFLWVTGRAMELGRECLNLWGYERV
DEIIVVKTNLQRIIRTGRGHWLNHGKEHCLVGVKGNPQGFNQGLDCDVIVAEVR
STSHKPDEIYGMIERLSPGTRKIELFGRPHNVQPNWITLGNQLDGIHLLDPDVARFK
QRYPDGIISKPKNL
    
```

 Tel: 1-631-559-9269 1-516-512-3133

 Email: info@creative-biomart.com  Fax: 1-631-938-8127

 45-1 Ramsey Road, Shirley, NY 11967, USA

Purity	>90%
Storage	Short Term Storage at 4 centigrade, Long Term, please prepare aliquots with 20% glycerol and store at -20 to -80 centigrade. Avoid freeze/thaw cycles.
Concentration	0.27 mg/ml
Official Full Name	Methyltransferase 3, N6-adenosine-methyltransferase complex catalytic subunit

GENE INFORMATION

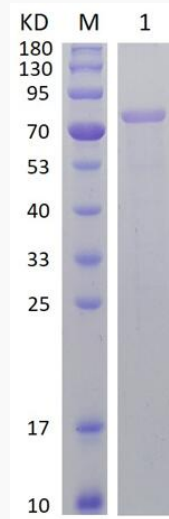
Gene Name	METTL3 methyltransferase 3, N6-adenosine-methyltransferase complex catalytic subunit [Homo sapiens (human)]
Official Symbol	METTL3
Synonyms	M6A; IME4; Spo8; MT-A70; hMETTL3
Gene ID	56339
mRNA Refseq	NM_019852
Protein Refseq	NP_062826
MIM	612472
UniProt ID	Q86U44

 Tel: 1-631-559-9269 1-516-512-3133

 Email: info@creative-biomart.com  Fax: 1-631-938-8127

 45-1 Ramsey Road, Shirley, NY 11967, USA

SDS-PAGE



12% SDS-PAGE analysis profiles of purified Human METTL3 (CBB stained).

 Tel: 1-631-559-9269 1-516-512-3133

 Email: info@creative-biomart.com  Fax: 1-631-938-8127

 45-1 Ramsey Road, Shirley, NY 11967, USA