

Recombinant Activity Human METTL3/METTL14 Complex Protein, GST-tagged

Cat. No. METTL3-610H Lot. No. (See product label)

SPECIFICATION

Product Overview	Full-length recombinant human METTL3/METTL14 complex was expressed by baculovirus in Sf9 insect cells using an N-terminal GST tag.
Species	Human
Source	Insect Cells
Description	This gene encodes the 70 kDa subunit of MT-A which is part of N6-adenosine-methyltransferase. This enzyme is involved in the posttranscriptional methylation of internal adenosine residues in eukaryotic mRNAs, forming N6-methyladenosine.
Molecular Mass	100 kDa (METTL3) and 84 kDa (METTL14)
Purity	>90 %
Applications	Methyltransferase Assay
Stability	One year at -70 centigrade from date of shipment.
Storage	Store product at -70 centigrade. For optimal storage, aliquot targets into smaller quantities after centrifugation and store at the recommended temperature. For most favorable performance, avoid repeated handling and multiple freeze/thaw cycles.
Concentration	0.1 µg/µL

 Tel: 1-631-559-9269 1-516-512-3133

 Email: info@creative-biomart.com  Fax: 1-631-938-8127

 45-1 Ramsey Road, Shirley, NY 11967, USA

Storage Buffer Recombinant protein stored in 50mM Tris-HCl, pH 7.5, 150mM NaCl, 10mM glutathione, 0.1mM EDTA, 0.25mM DTT, 0.1mM PMSF, 25% glycerol.

GENE INFORMATION

Gene Name METTL3 methyltransferase 3, N6-adenosine-methyltransferase complex catalytic subunit [Homo sapiens (human)]

Official Symbol METTL3

Synonyms METTL3; methyltransferase 3, N6-adenosine-methyltransferase complex catalytic subunit; M6A; IME4; Spo8; MT-A70; hMETTL3; N6-adenosine-methyltransferase catalytic subunit; N6-adenosine-methyltransferase 70 kDa subunit; adoMet-binding subunit of the human mRNA (N6-adenosine)-methyltransferase; mRNA (2'-O-methyladenosine-N(6)-)-methyltransferase; mRNA m(6)A methyltransferase; methyltransferase like 3; methyltransferase-like protein 3; EC 2.1.1.348

Gene ID 56339

mRNA Refseq NM_019852

Protein Refseq NP_062826

MIM 612472

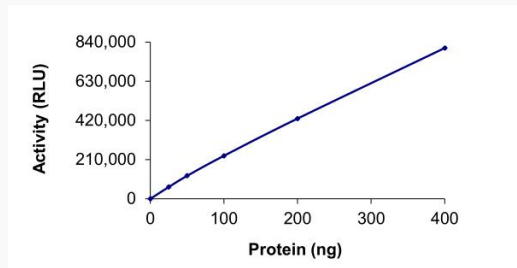
UniProt ID Q86U44

 Tel: 1-631-559-9269 1-516-512-3133

 Email: info@creative-biomart.com  Fax: 1-631-938-8127

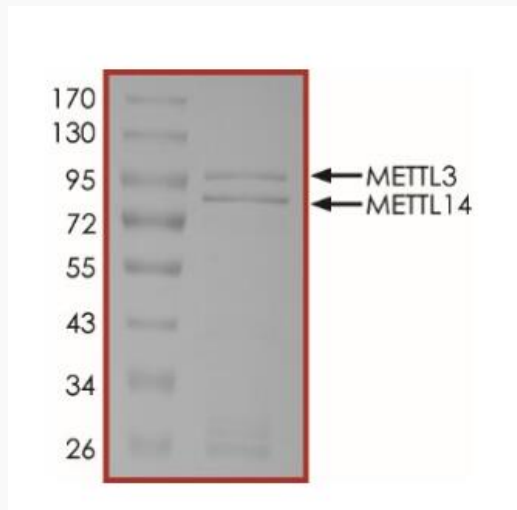
 45-1 Ramsey Road, Shirley, NY 11967, USA

Specific activity



The specific activity of METTL3/METTL14 was determined to be 750 pmol/min/mg as per activity assay protocol.

Purity



The purity of METTL3/METTL14 complex was determined to be >90% by densitometry, approx. MW 100 kDa (METTL3) and 84 kDa (METTL14).