

Recombinant Full Length Human METTL3 Protein, C-Flag-tagged

Cat. No. METTL3-836HFL **Lot. No.** (See product label)

SPECIFICATION

Product Overview	Recombinant Full Length Human METTL3 Protein, fused to Flag-tag at C-terminus, was expressed in Mammalian cells.
Species	Human
Source	Mammalian Cells
Description	This gene encodes the 70 kDa subunit of MT-A which is part of N6-adenosine-methyl transferase. This enzyme is involved in the posttranscriptional methylation of internal adenosine residues in eukaryotic mRNAs, forming N6-methyladenosine.
Form	25 mM Tris HCl, pH 7.3, 100 mM glycine, 10% glycerol.
Molecular Mass	64.3 kDa
AA Sequence	MSDTWSSIQAHKKQLDSLRLRERLQRRRKQDSGHLDLRNPEAALSPTFRSDSPVPTAP TSGGPKPSTASAVP ELATDPELEKLLHHLSDLALTLPTDAVSICLAISTPDAPATQD GVESLLQKFAAQELIEVKRGLLQDDA HPTLVTYADHSKLSAMMGAVAEKKGPEVA GTVTGQKRRAEQDSTTVAAFASSLVSGLNSSASEPAKEPA KKSARKHAASDVDLEIE SLLNQQSTKEQQSKKVSQEILELLNTTAAKEQSIVEKFRSRGRAQVQEFCDYGT KE ECMKASDADRPCRKLHFRRRIINKHTDESLGDCSFLNTCFHMDTCKYVHYEIDACMD SEAPGSKDHTPS QELALTQSVGGDSSADRLFPPQWICCDIRYLDVSILGKFAVVMA DPPWDIHMELPYGTLTDEMRRNLNIP VLQDDGFLFLWVTGRAMELGRECLNLWGY ERVDEIIVVKTNQLQRIIRTGRTGHWLNHGKEHCLVGVKGN PQGFNQGLDCDVIVA

 Tel: 1-631-559-9269 1-516-512-3133

 Email: info@creative-biomart.com  Fax: 1-631-938-8127

 45-1 Ramsey Road, Shirley, NY 11967, USA

EVIRSTSHKPDEIYGMIERLSPGTRKIELFGRPHNVQPNWITLGNQLDGIHLLDPD
VVARFKQRYPDGIISKPKNLTRTRPLEQKLISEEDLAANDILDYKDDDDKV

Purity	> 80% as determined by SDS-PAGE and Coomassie blue staining.
Stability	Stable for 12 months from the date of receipt of the product under proper storage and handling conditions. Avoid repeated freeze-thaw cycles.
Storage	Store at -80 centigrade.
Concentration	>50 ug/mL as determined by microplate BCA method.
Preparation	Recombinant protein was captured through anti-DDK affinity column followed by conventional chromatography steps.
Full Length	Full L.

GENE INFORMATION

Gene Name	METTL3 methyltransferase 3, N6-adenosine-methyltransferase complex catalytic subunit [Homo sapiens (human)]
Official Symbol	METTL3
Synonyms	M6A; IME4; Spo8; MT-A70; hMETTL3
Gene ID	56339
mRNA Refseq	NM_019852.5
Protein Refseq	NP_062826.2

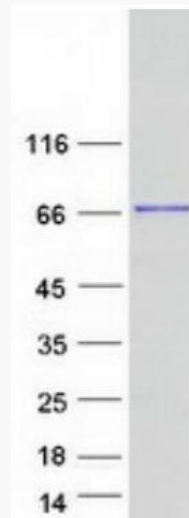
 Tel: 1-631-559-9269 1-516-512-3133

 Email: info@creative-biomart.com  Fax: 1-631-938-8127

 45-1 Ramsey Road, Shirley, NY 11967, USA

MIM 612472

UniProt ID Q86U44



Coomassie blue staining of purified METTL3 protein.

Tel: 1-631-559-9269 1-516-512-3133

Email: info@creative-biomart.com Fax: 1-631-938-8127

45-1 Ramsey Road, Shirley, NY 11967, USA