

# Recombinant Human METTL4 Protein, Myc/DDK-tagged, C13 and N15-labeled

Cat. No. METTL4-1193H Lot. No. (See product label)

## SPECIFICATION

### Product Overview

METTL4 MS Standard C13 and N15-labeled recombinant protein (NP\_073751) with a C-terminal MYC/DDK tag, was expressed in HEK293 cells.

### Species

Human

### Source

HEK293

### Description

METTL4 (Methyltransferase Like 4) is a Protein Coding gene. Diseases associated with METTL4 include Chromosome 18P Deletion Syndrome and Facioscapulohumeral Muscular Dystrophy 2. Gene Ontology (GO) annotations related to this gene include nucleic acid binding and methyltransferase activity.

### Molecular Mass

54.1 kDa

### AA Sequence

```
MSVVHQLSAGWLLDHL SFINKINYQLHQHHEPCCRKKEFTTSVHFESLQMDSVSSS
GVCAAFIASDSSTKPENDDGGNYEMFTRKFVFRPELFDVTKPYITPAVHKECQQSNE
KEDLMNGVKKEISISIIIGKKRKRCVVFNQGELDAMEYHTKIRELILDGSLQLIQEGLKS
GFLYPLFEKQDKGSKPITLPLDACSLSELCEMAKHLPSLNEMEHQTLQLVEEDTSVT
EQDLFLRVVENNSSFTKVITLMGQKYLLPPKSSFLLSDISCMQPLLNYRKTDFDVIDP
PWQNKSVKRSNRYSYLSPLQIKIPIPKLAAPNCLLVTVWTRNQKHLRFIKEELYPSW
SVEVVAEWHWVKITNSGEFVFPDLSPHKKPYEGLILGRVQEKTALPLRNADVNLPI
PDHKLIVSVPCTLHSHKPPLAEVLKDYIKPDGEYLELFARNLQPGWTSWGNEVLKFQ
HVDYFIALESGSTRTRPLEQKLISEEDLAANDILDYKDDDDKV
```

 Tel: 1-631-559-9269 1-516-512-3133

 Email: [info@creative-biomart.com](mailto:info@creative-biomart.com)  Fax: 1-631-938-8127

 45-1 Ramsey Road, Shirley, NY 11967, USA

<b>Purity</b>	> 80% as determined by SDS-PAGE and Coomassie blue staining
<b>Stability</b>	Stable for 3 months from receipt of products under proper storage and handling conditions.
<b>Storage</b>	Store at -80 centigrade. Avoid repeated freeze-thaw cycles.
<b>Concentration</b>	50 µg/mL as determined by BCA
<b>Storage Buffer</b>	100 mM glycine, 25 mM Tris-HCl, pH 7.3.

## GENE INFORMATION

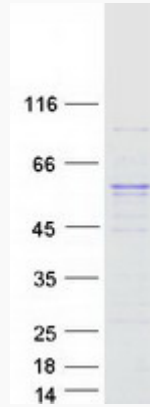
<b>Gene Name</b>	METTL4 methyltransferase like 4 [ Homo sapiens (human) ]
<b>Official Symbol</b>	METTL4
<b>Synonyms</b>	METTL4; methyltransferase like 4; methyltransferase-like protein 4; FLJ23017; HsT661; MGC117235;
<b>Gene ID</b>	64863
<b>mRNA Refseq</b>	NM_022840
<b>Protein Refseq</b>	NP_073751
<b>UniProt ID</b>	Q8N3J2

 Tel: 1-631-559-9269 1-516-512-3133

 Email: [info@creative-biomart.com](mailto:info@creative-biomart.com)  Fax: 1-631-938-8127

 45-1 Ramsey Road, Shirley, NY 11967, USA

**SDS-PAGE**



 Tel: 1-631-559-9269 1-516-512-3133

 Email: [info@creative-biomart.com](mailto:info@creative-biomart.com)  Fax: 1-631-938-8127

 45-1 Ramsey Road, Shirley, NY 11967, USA