

Recombinant Human METTL4 Protein, GST-tagged

Cat. No. METTL4-4402H Lot. No. (See product label)

SPECIFICATION

Product Overview	Human METTL4 full-length ORF (NP_073751.2, 1 a.a. - 472 a.a.) recombinant protein with GST-tag at N-terminal.
Species	Human
Source	Wheat Germ
Description	METTL4 (Methyltransferase Like 4) is a Protein Coding gene. GO annotations related to this gene include nucleic acid binding and methyltransferase activity.
Molecular Mass	80.5 kDa
AA Sequence	MSVVHQLSAGWLLDHLDFINKINYQLHQHHEPCCRKKEFTTSVHFESLQMDSVSSS GVCAAFIASDSSTKPENDDGGNYEMFTRKFVFRPELFDVTKPYITPAVHKECQQSNE KEDLMNGVKKEISISIIGKKRKRRCVFNQGELDAMEYHTKIRELILDGSLQLIQEGLKS GFLYPLFEKQDKGSKPITLPLDACSLSELCEMAKHLPNEMEHQTLQLVEEDTSVT EQDLFLRVVENNSSFTKVITLMGQKYLPPKSSFLLSDISCMQPLLNYRKTDFDVIDP PWQNKSVKRSNRYSYLSPLQIQIPIPKLAAPNCLLVTVWVTRQKHLRFIKEELYPS WSVEVVAEWHWVKITNSGEFVFPDPSHKPKPYEGLILGRVQEKALPLRNADVNL PIPDHKLIVSVPCTLHSHKPPLAEVLKDYIKPDGEYLELFARNLQPGWTSWGNEVLKF QHVDYFIALESGS
Applications	Enzyme-linked Immunoabsorbent Assay Western Blot (Recombinant protein) Antibody Production

 Tel: 1-631-559-9269 1-516-512-3133

 Email: info@creative-biomart.com  Fax: 1-631-938-8127

 45-1 Ramsey Road, Shirley, NY 11967, USA



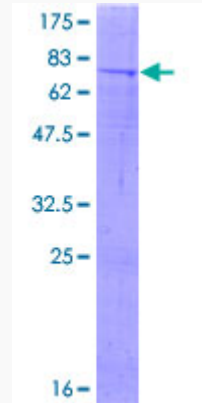
Protein Array

Notes	Best use within three months from the date of receipt of this protein.
Storage	Store at -80 centigrade. Aliquot to avoid repeated freezing and thawing.
Storage Buffer	50 mM Tris-HCl, 10 mM reduced Glutathione, pH=8.0 in the elution buffer.

GENE INFORMATION

Gene Name	METTL4 methyltransferase like 4 [Homo sapiens]
Official Symbol	METTL4
Synonyms	METTL4; methyltransferase like 4; methyltransferase-like protein 4; FLJ23017; HsT661; MGC117235;
Gene ID	64863
mRNA Refseq	NM_022840
Protein Refseq	NP_073751
UniProt ID	Q8N3J2

**Quality Control
Testing**



12.5% SDS-PAGE Stained with Coomassie Blue

 Tel: 1-631-559-9269 1-516-512-3133

 Email: info@creative-biomart.com  Fax: 1-631-938-8127

 45-1 Ramsey Road, Shirley, NY 11967, USA