

Recombinant Human METTL4 protein, His&Myc-tagged

Cat. No. METTL4-6322H Lot. No. (See product label)

SPECIFICATION

Product Overview	Recombinant Human METTL4 protein(Q8N3J2)(1-472aa), fused with N-terminal His tag and C-terminal Myc tag, was expressed in E.coli.
Species	Human
Source	E.coli
ProteinLength	1-472a.a.
Tag	His&Myc
Form	If the delivery form is liquid, the default storage buffer is Tris/PBS-based buffer, 5%-50% glycerol. If the delivery form is lyophilized powder, the buffer before lyophilization is Tris/PBS-based buffer, 6% Trehalose, pH 8.0.
Molecular Mass	61.5 kDa
Purity	Greater than 85% as determined by SDS-PAGE.
Storage	Store at -20°C/-80°C upon receipt, aliquoting is necessary for mutiple use. Avoid repeated freeze-thaw cycles.
Reconstitution	We recommend that this vial be briefly centrifuged prior to opening to bring the contents to the bottom. Please reconstitute protein in deionized sterile water to a concentration of 0.1-1.0 mg/mL.We recommend to add 5-50% of glycerol (final

 Tel: 1-631-559-9269 1-516-512-3133

 Email: info@creative-biomart.com  Fax: 1-631-938-8127

 45-1 Ramsey Road, Shirley, NY 11967, USA

concentration) and aliquot for long-term storage at -20°C/-80°C.

AA Sequence

```
MSVVHQLSAGWLLDHLDFINKINYQLHQHHEPCCRKKEFTTSVHFESLQMDSVSSS
GVCAAFIASDSSTKPENDDGGNYEMFTRKFVFRPELFDVTKPYITPAVHKECQQSNE
KEDLMNGVKKEISISIIGKKRKRCVVFNQGELDAMEYHTKIRELILDGSLQLIQEGLKS
GFLYPLFEKQDKGSKPITLPLDACSLSELCEMAKHLP SLNEMEHQTLQLVEEDTSVT
EQDLFLRVVENNSSFTKVITLMGQKYLLPPKSSFLLSDISCMQPLLNYRKTDFDVIDIP
PWQNKSVKRSNRYSYLSPLQIQIPIPKLAAPNCLLVTVWVTRQKHLRFIKEELYPS
WSVEVVAEWHWVKITNSGEFVFPLDSPHKPYEGLILGRVQEKTALPLRNADVNVL
PIPDHKLIVSVPCTLHSHKPPLAEVLKDYIKPDGEYLELFARNLQPGWTSWGNEVLKF
QHVDYFIAVESGS
```

GENE INFORMATION

Gene Name [METTL4 methyltransferase like 4 \[Homo sapiens \]](#)

Official Symbol [METTL4](#)

Synonyms METTL4; methyltransferase like 4; methyltransferase-like protein 4; FLJ23017; HsT661; MGC117235;

Gene ID [64863](#)

mRNA Refseq [NM_022840](#)

Protein Refseq [NP_073751](#)

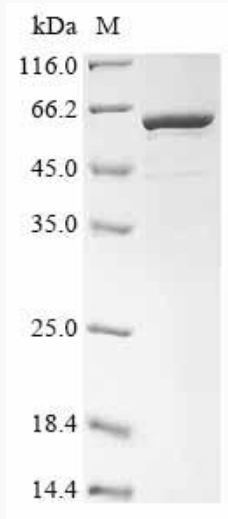
UniProt ID [Q8N3J2](#)

 Tel: 1-631-559-9269 1-516-512-3133

 Email: info@creative-biomart.com  Fax: 1-631-938-8127

 45-1 Ramsey Road, Shirley, NY 11967, USA

SDS-PAGE



 Tel: 1-631-559-9269 1-516-512-3133

 Email: info@creative-biomart.com  Fax: 1-631-938-8127

 45-1 Ramsey Road, Shirley, NY 11967, USA