

Recombinant Full Length Human METTL4 Protein, C-Flag-tagged

Cat. No. METTL4-977HFL Lot. No. (See product label)

SPECIFICATION

Product Overview	Recombinant Full Length Human METTL4 Protein, fused to Flag-tag at C-terminus, was expressed in Mammalian cells.
Species	Human
Source	Mammalian Cells
Description	Enables RNA methyltransferase activity and site-specific DNA-methyltransferase (adenine-specific) activity. Involved in nucleic acid metabolic process; regulation of RNA metabolic process; and regulation of mitochondrial DNA replication. Located in cytosol; mitochondrial matrix; and nucleus.
Form	25 mM Tris HCl, pH 7.3, 100 mM glycine, 10% glycerol.
Molecular Mass	53.9 kDa
AA Sequence	MSVVHQLSAGWLLDHLDFINKINYQLHQHHEPCCRKKEFTTSVHFESLQMDSVSSS GVCAAFIASDSSTK PENDDGGNYEMFTRKFVFRPELFDVTKPYITPAVHKECQQSN EKEDLMNGVKKEISISIIGKKRKRKCVVF NQGELDAMEYHTKIRELILDGSLQLIQEGLK SGFLYPLFEKQDKGSKPITLPLDACSLSELCEMAKHLPS LNEMEHQTLQLVEEDTSV TEQDLFLRVVENNSSFTKVITLMGQKYLLPPKSSFLLSDISCMQPLLNYRKT FDVIVID PPWQNKSVKRSNRYSYLSPLQIKQIPIPKLAAPNCLLVTVWVTNRQKHLRFIKEELYPS WSVEV VAEWHWVKITNSGEFVFPDLSPHKKPYEGLILGRVQEKTALPLRNADVNL PIPDHKLIVSVPCTLHSHK

 Tel: 1-631-559-9269 1-516-512-3133

 Email: info@creative-biomart.com  Fax: 1-631-938-8127

 45-1 Ramsey Road, Shirley, NY 11967, USA

PPLAEVLKDYIKPDGEYLELFARNLQPGWTSWGNEVLKFQHVDYFIALESGSTRTRP
LEQLISEEDLAANDILDYKDDDDKV

Purity	> 80% as determined by SDS-PAGE and Coomassie blue staining.
Stability	Stable for 12 months from the date of receipt of the product under proper storage and handling conditions. Avoid repeated freeze-thaw cycles.
Storage	Store at -80 centigrade.
Concentration	>50 ug/mL as determined by microplate BCA method.
Preparation	Recombinant protein was captured through anti-DDK affinity column followed by conventional chromatography steps.
Full Length	Full L.

GENE INFORMATION

Gene Name	METTL4 methyltransferase 4, N6-adenosine [Homo sapiens (human)]
Official Symbol	METTL4
Synonyms	HsT661
Gene ID	64863
mRNA Refseq	NM_022840.5
Protein Refseq	NP_073751.3

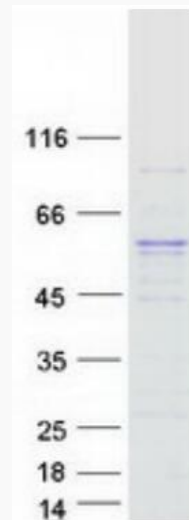
 Tel: 1-631-559-9269 1-516-512-3133

 Email: info@creative-biomart.com  Fax: 1-631-938-8127

 45-1 Ramsey Road, Shirley, NY 11967, USA

MIM 619626

UniProt ID Q8N3J2



Coomassie blue staining of purified METTL4 protein.

 Tel: 1-631-559-9269 1-516-512-3133

 Email: info@creative-biomart.com  Fax: 1-631-938-8127

 45-1 Ramsey Road, Shirley, NY 11967, USA