

Recombinant Human METTL6 Protein, Myc/DDK-tagged, C13 and N15-labeled

Cat. No. METTL6-2554H **Lot. No.** (See product label)

SPECIFICATION

Product Overview	METTL6 MS Standard C13 and N15-labeled recombinant protein (NP_689609) with a C-terminal MYC/DDK tag, was expressed in HEK293 cells.
Species	Human
Source	HEK293
Description	S-adenosyl-L-methionine-dependent methyltransferase that mediates N3-methylcytidine modification of residue 32 of the tRNA anticodon loop of tRNA(Ser).
Molecular Mass	33.1 kDa
AA Sequence	MASLQRKGLQARILTSEEEKLRDQTLVSDFKQQKLEQEAQKNWDLFYKRNSTNFKDRHWTTRFEELRSCREFEDQKLTMLEAGCGVGNCLFPLLEEDPNIFAYACDFS PRAIEYVKQNPLYDTERCKVFQCDLTKDLDLHVPPEVDVVMLIFVLSAVHPDKMH LVLQNIYKVLKPGKSVLFRDYGLYDHAMLRFKASSKLGENFYVRQDGTRSYYFFTD LAQLFMDTGYEEVVNEYVFRETVNKKEGLCVPRVFLQSKFLKPPKNPSPVVLGLDP KSTRTRPLEQKLISEEDLAANDILDYKDDDDKV
Purity	> 80% as determined by SDS-PAGE and Coomassie blue staining
Stability	Stable for 3 months from receipt of products under proper storage and handling conditions.

 Tel: 1-631-559-9269 1-516-512-3133

 Email: info@creative-biomart.com  Fax: 1-631-938-8127

 45-1 Ramsey Road, Shirley, NY 11967, USA

Storage	Store at -80 centigrade. Avoid repeated freeze-thaw cycles.
----------------	---

Concentration	50 µg/mL as determined by BCA
----------------------	-------------------------------

Storage Buffer	100 mM glycine, 25 mM Tris-HCl, pH 7.3.
-----------------------	---

GENE INFORMATION

Gene Name	METTL6 methyltransferase like 6 [Homo sapiens (human)]
------------------	--

Official Symbol	METTL6
------------------------	--------

Synonyms	METTL6; methyltransferase like 6; methyltransferase-like protein 6; MGC24132;
-----------------	---

Gene ID	131965
----------------	--------

mRNA Refseq	NM_152396
--------------------	-----------

Protein Refseq	NP_689609
-----------------------	-----------

MIM	618903
------------	--------

UniProt ID	Q8TCB7
-------------------	--------

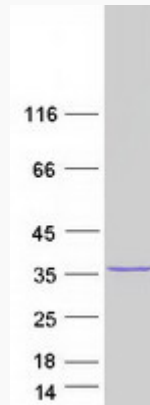
 Tel: 1-631-559-9269 1-516-512-3133

 Email: info@creative-biomart.com  Fax: 1-631-938-8127

 45-1 Ramsey Road, Shirley, NY 11967, USA



SDS-PAGE



Tel: 1-631-559-9269 1-516-512-3133

Email: info@creative-biomart.com Fax: 1-631-938-8127

45-1 Ramsey Road, Shirley, NY 11967, USA