

Recombinant Human METTL6 Protein, GST-tagged

Cat. No. METTL6-4400H Lot. No. (See product label)

SPECIFICATION

Product Overview	Human METTL6 full-length ORF (AAH22400.1, 1 a.a. - 255 a.a.) recombinant protein with GST-tag at N-terminal.
Species	Human
Source	Wheat Germ
Description	METTL6 (Methyltransferase Like 6) is a Protein Coding gene. GO annotations related to this gene include methyltransferase activity. An important paralog of this gene is METTL2B.
Molecular Mass	56.5 kDa
AA Sequence	MASLQRKGLQARILTSEEEKLRDQTLVSDFKQQKLEQEAQKNWDLFYKRNSTNF FKDRHWTTRFEELRSCREFEDQKLTMLEAGCGVGNCLFPLLEEDPNIFAYACDFS PRAIEYVKQNPLYDTERCKVFQCDLTKDDLLDHVPPESVDVVMLIFVLSAVHPDKMH LVLQNIYKVLKPGKSVLFRDYGLYDHAMLRFKASSKLGENFYVRQDGRSYFFTDDF LAQLFMDTGYEEVVNEYVFRET VNKKEGL
Applications	Enzyme-linked Immunoabsorbent Assay Western Blot (Recombinant protein) Antibody Production Protein Array
Notes	Best use within three months from the date of receipt of this protein.

 Tel: 1-631-559-9269 1-516-512-3133

 Email: info@creative-biomart.com  Fax: 1-631-938-8127

 45-1 Ramsey Road, Shirley, NY 11967, USA

Storage Store at -80 centigrade. Aliquot to avoid repeated freezing and thawing.

Storage Buffer 50 mM Tris-HCl, 10 mM reduced Glutathione, pH=8.0 in the elution buffer.

GENE INFORMATION

Gene Name METTL6 methyltransferase like 6 [Homo sapiens]

Official Symbol METTL6

Synonyms METTL6; methyltransferase like 6; methyltransferase-like protein 6; MGC24132;

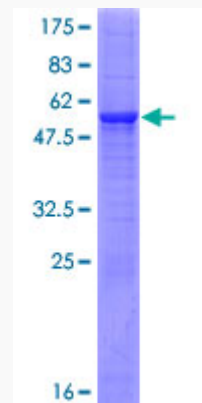
Gene ID 131965

mRNA Refseq NM_152396

Protein Refseq NP_689609

UniProt ID Q8TCB7

Quality Control Testing



12.5% SDS-PAGE Stained with Coomassie Blue

 Tel: 1-631-559-9269 1-516-512-3133

 Email: info@creative-biomart.com  Fax: 1-631-938-8127

 45-1 Ramsey Road, Shirley, NY 11967, USA