

Recombinant Human METTL7B Protein, GST-tagged

Cat. No. METTL7B-4398H Lot. No. (See product label)

SPECIFICATION

Product Overview	Human METTL7B full-length ORF (NP_689850.1, 1 a.a. - 194 a.a.) recombinant protein with GST-tag at N-terminal.
Species	Human
Source	Wheat Germ
Description	METTL7B (Methyltransferase Like 7B) is a Protein Coding gene. GO annotations related to this gene include methyltransferase activity and S-adenosylmethionine-dependent methyltransferase activity. An important paralog of this gene is METTL7A.
Molecular Mass	48.5 kDa
AA Sequence	MESKKRELFSSQIKGLTGASGKVALLELGCGTGANFQFYPPGCRVTCLDPNPHFEKF LTKSMAENRHLQYERFVVAPGEDMRQLADGSM DVVVCTLVLC SVQSPRKVLQEVR RVL R PGGV LFFWEHVAEPYGSWAFMWQQVF EPTWKHIGDGCCLTRETWKDLENA QFSEIQMERQPPPLKWL PVGPHIMGKAVK
Applications	Enzyme-linked Immunoabsorbent Assay Western Blot (Recombinant protein) Antibody Production Protein Array
Notes	Best use within three months from the date of receipt of this protein.

 Tel: 1-631-559-9269 1-516-512-3133

 Email: info@creative-biomart.com  Fax: 1-631-938-8127

 45-1 Ramsey Road, Shirley, NY 11967, USA

Storage Store at -80 centigrade. Aliquot to avoid repeated freezing and thawing.

Storage Buffer 50 mM Tris-HCl, 10 mM reduced Glutathione, pH=8.0 in the elution buffer.

GENE INFORMATION

Gene Name METTL7B methyltransferase like 7B [Homo sapiens]

Official Symbol METTL7B

Synonyms METTL7B; methyltransferase like 7B; methyltransferase-like protein 7B; MGC17301;

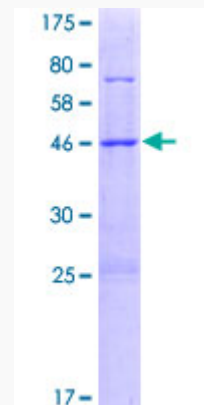
Gene ID 196410

mRNA Refseq NM_152637

Protein Refseq NP_689850

UniProt ID Q6UX53

Quality Control Testing



12.5% SDS-PAGE Stained with Coomassie Blue

 Tel: 1-631-559-9269 1-516-512-3133

 Email: info@creative-biomart.com  Fax: 1-631-938-8127

 45-1 Ramsey Road, Shirley, NY 11967, USA