

Recombinant Human METTL7B protein, His-tagged

Cat. No. METTL7B-5943H Lot. No. (See product label)

SPECIFICATION

Product Overview	Recombinant Human METTL7B protein(Q6UX53)(24-244aa), fused to N-terminal His tag, was expressed in E. coli.
Species	Human
Source	E.coli
ProteinLength	24-244aa
Form	If the delivery form is liquid, the default storage buffer is Tris/PBS-based buffer, 5%-50% glycerol. If the delivery form is lyophilized powder, the buffer before lyophilization is Tris/PBS-based buffer, 6% Trehalose, pH 8.0.
Molecular Mass	29.3 kDa
Purity	Greater than 85% as determined by SDS-PAGE.
Storage	Store at -20°C/-243°C upon receipt, aliquoting is necessary for mutiple use. Avoid repeated freeze-thaw cycles.
Reconstitution	Please reconstitute protein in deionized sterile water to a concentration of 0.1-1.0 mg/mL. We recommend to add 5-50% of glycerol (final concentration) and aliquot for long-term storage at -20°C/-80°C. Our default final concentration of glycerol is 213%.

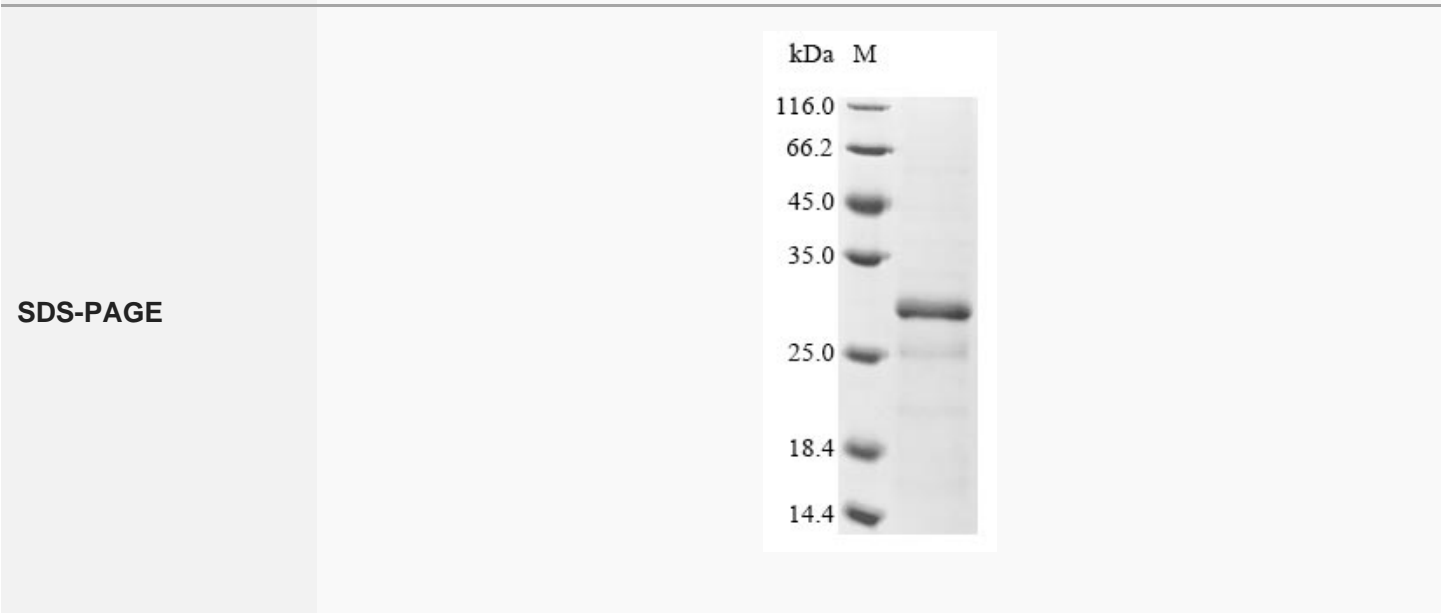
GENE INFORMATION

 Tel: 1-631-559-9269 1-516-512-3133

 Email: info@creative-biomart.com  Fax: 1-631-938-8127

 45-1 Ramsey Road, Shirley, NY 11967, USA

Gene Name	METTL7B methyltransferase like 7B [Homo sapiens]
Official Symbol	METTL7B
Synonyms	METTL7B; methyltransferase like 7B; methyltransferase-like protein 7B; MGC17301;
Gene ID	196410
mRNA Refseq	NM_152637
Protein Refseq	NP_689850
UniProt ID	Q6UX53



Tel: 1-631-559-9269 1-516-512-3133

Email: info@creative-biomart.com Fax: 1-631-938-8127

45-1 Ramsey Road, Shirley, NY 11967, USA