

## Recombinant Human MEX3C Protein, GST-tagged

Cat. No. MEX3C-4395H Lot. No. (See product label)

### SPECIFICATION

**Product Overview** Human MEX3C full-length ORF ( AAI48856.1, 1 a.a. - 464 a.a.) recombinant protein with GST-tag at N-terminal.

**Species** Human

**Source** Wheat Germ

**Description** This gene encodes a member of a family of proteins with two K homology (KH) RNA-binding domains and a C-terminal RING-finger domain. The protein interacts with mRNA via the KH domains, and the protein shuttles between the nucleus and cytoplasm. Polymorphisms in this gene may contribute to hypertension. [provided by RefSeq, Oct 2009]

**Molecular Mass** 77.99 kDa

**AA Sequence**

```
MMAAMLSHAYGPGGCGAAAAALNGEQAALLRRKSVNTECVVPSSEHVAEIVGR
QGCKIKALRAKTNTYIKTPVRGEEPIFVVTGRKEDVAMAKREILSAAEHFSMIRASRN
KNGPALGGLSCSPNLPGQTTVQVRVPYRVVGLVVGPKGATIKRIQQQTHTYIVTPSR
DKEPVFEVTGMPENVDRAREEIEMHIAMRTGNYIELNEENDFHNGTDVSFEGGTL
GSAWLSSNPVPPSRARMISNYRNDSSSSSLGSGSTDSYFGSNRLADFSPTSPFSTGN
FWFGDTLPSVGSDELAVDSPAFDSLPTSAQTIWTPFEPVNPLSGFGSDPSGNMKTQ
RRGSQPSTPRLSPTFPESIEHPLARRVRSDPPSTGNHVGLPIYIPAFSNGTNSYSSS
NGGSTSSSPESRRKHDCVICFENEVIAALVPCGHNLFCMECANKICEKRTSPSPVC
QTAVTQAIQIHS
```

 Tel: 1-631-559-9269 1-516-512-3133

 Email: [info@creative-biomart.com](mailto:info@creative-biomart.com)  Fax: 1-631-938-8127

 45-1 Ramsey Road, Shirley, NY 11967, USA

<b>Applications</b>	Enzyme-linked Immunoabsorbent Assay Western Blot (Recombinant protein) Antibody Production Protein Array
<b>Notes</b>	Best use within three months from the date of receipt of this protein.
<b>Storage</b>	Store at -80 centigrade. Aliquot to avoid repeated freezing and thawing.
<b>Storage Buffer</b>	50 mM Tris-HCl, 10 mM reduced Glutathione, pH=8.0 in the elution buffer.

## GENE INFORMATION

<b>Gene Name</b>	MEX3C mex-3 RNA binding family member C [ Homo sapiens (human) ]
<b>Official Symbol</b>	MEX3C
<b>Synonyms</b>	MEX3C; mex-3 RNA binding family member C; RKHD2; BM-013; MEX-3C; RNF194; RNA-binding E3 ubiquitin-protein ligase MEX3C; MEX3C variant 1; MEX3C variant 2; RING finger and KH domain-containing protein 2; RING finger protein 194; RING-type E3 ubiquitin transferase MEX3C; RNA-binding protein MEX3C; ring finger and KH domain containing 2; EC 2.3.2.27
<b>Gene ID</b>	<a href="https://www.ncbi.nlm.nih.gov/gene/?term=51320">https://www.ncbi.nlm.nih.gov/gene/?term=51320</a>
<b>mRNA Refseq</b>	NM_016626
<b>Protein Refseq</b>	NP_057710
<b>MIM</b>	611005

 Tel: 1-631-559-9269 1-516-512-3133

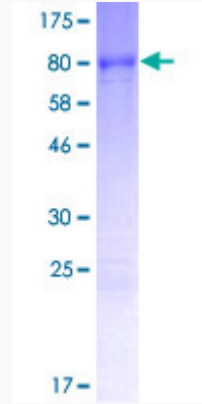
 Email: [info@creative-biomart.com](mailto:info@creative-biomart.com)  Fax: 1-631-938-8127

 45-1 Ramsey Road, Shirley, NY 11967, USA


UniProt ID

Q5U5Q3

Quality Control  
Testing



12.5% SDS-PAGE Stained with Coomassie Blue

 Tel: 1-631-559-9269 1-516-512-3133

 Email: [info@creative-biomart.com](mailto:info@creative-biomart.com)  Fax: 1-631-938-8127

 45-1 Ramsey Road, Shirley, NY 11967, USA