

Recombinant Full Length Human MFAP2 Protein, C-Flag-tagged

Cat. No. MFAP2-1395HFL **Lot. No.** (See product label)

SPECIFICATION

Product Overview	Recombinant Full Length Human MFAP2 Protein, fused to Flag-tag at C-terminus, was expressed in Mammalian cells.
Species	Human
Source	Mammalian Cells
Description	Microfibrillar-associated protein 2 is a major antigen of elastin-associated microfibrils and a candidate for involvement in the etiology of inherited connective tissue diseases. Four transcript variants encoding two different isoforms have been found for this gene.
Form	25 mM Tris HCl, pH 7.3, 100 mM glycine, 10% glycerol.
Molecular Mass	18.9 kDa
AA Sequence	MRAAYLFLFLPAGLLAQGQYDLPLPPFPDHVQYTHYSDQIDNPDYYDYQEVTPR PSEEQFQFQSQQQV QQEVIPAPTPEPGNAELEPTEPGPLDCREEQYPCTRLYSIHR PCKQCLNEVCFYSLRRVYVINKEICVRT VCAHEELLRADLCRDKFSKCGVMASGLCQSVAAASCARSCGSCSTRTRPLEQKLISE EDLAANDILDYKDDDDKV
Purity	> 80% as determined by SDS-PAGE and Coomassie blue staining.

 Tel: 1-631-559-9269 1-516-512-3133

 Email: info@creative-biomart.com  Fax: 1-631-938-8127

 45-1 Ramsey Road, Shirley, NY 11967, USA

Stability	Stable for 12 months from the date of receipt of the product under proper storage and handling conditions. Avoid repeated freeze-thaw cycles.
Storage	Store at -80 centigrade.
Concentration	>50 ug/mL as determined by microplate BCA method.
Preparation	Recombinant protein was captured through anti-DDK affinity column followed by conventional chromatography steps.
Protein Families	Secreted Protein
Full Length	Full L.

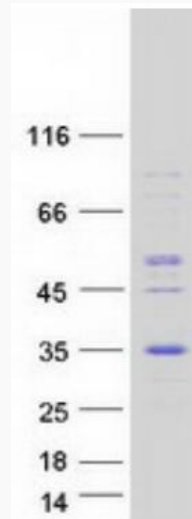
GENE INFORMATION

Gene Name	MFAP2 microfibril associated protein 2 [Homo sapiens (human)]
Official Symbol	MFAP2
Synonyms	MAGP; MAGP1; MAGP-1
Gene ID	4237
mRNA Refseq	NM_017459.3
Protein Refseq	NP_059453.1
MIM	156790
UniProt ID	P55001

 Tel: 1-631-559-9269 1-516-512-3133

 Email: info@creative-biomart.com  Fax: 1-631-938-8127

 45-1 Ramsey Road, Shirley, NY 11967, USA



Coomassie blue staining of purified MFAP2 protein.

 Tel: 1-631-559-9269 1-516-512-3133

 Email: info@creative-biomart.com  Fax: 1-631-938-8127

 45-1 Ramsey Road, Shirley, NY 11967, USA