

Recombinant Human MFAP2 Protein, Myc/DDK-tagged, C13 and N15-labeled

Cat. No. MFAP2-1530H Lot. No. (See product label)

SPECIFICATION

Product Overview	MFAP2 MS Standard C13 and N15-labeled recombinant protein (NP_059453) with a C-terminal MYC/DDK tag, was expressed in HEK293 cells.
Species	Human
Source	HEK293
Description	Microfibrillar-associated protein 2 is a major antigen of elastin-associated microfibrils and a candidate for involvement in the etiology of inherited connective tissue diseases. Four transcript variants encoding two different isoforms have been found for this gene.
Molecular Mass	20.8 kDa
AA Sequence	MRAAYLFLFLPAGLLAQQYDLPLPPFDHVQYTHYSDQIDNPDYYDYQEVTPR PSEEQFQFQSQQVQQEVIPAPTPEPGNAELEPTEPGPLDCREEQYPCTRLYSIHR PCKQCLNEVCFYSLRRVYVINKEICVRTVCAHELLRADLCRDKFSKCGVMASGLC QSVAAASCARSCGSCSTRTRPLEQKLISEEDLAANDILDYKDDDDKV
Purity	> 80% as determined by SDS-PAGE and Coomassie blue staining
Stability	Stable for 3 months from receipt of products under proper storage and handling conditions.

 Tel: 1-631-559-9269 1-516-512-3133

 Email: info@creative-biomart.com  Fax: 1-631-938-8127

 45-1 Ramsey Road, Shirley, NY 11967, USA

Storage	Store at -80 centigrade. Avoid repeated freeze-thaw cycles.
----------------	---

Concentration	50 µg/mL as determined by BCA
----------------------	-------------------------------

Storage Buffer	100 mM glycine, 25 mM Tris-HCl, pH 7.3.
-----------------------	---

GENE INFORMATION

Gene Name	MFAP2 microfibrillar-associated protein 2 [Homo sapiens (human)]
------------------	--

Official Symbol	MFAP2
------------------------	-------

Synonyms	MFAP2; microfibrillar-associated protein 2; MAGP; MAGP 1; microfibril-associated glycoprotein 1; MAGP1; MAGP-1; FLJ50901;
-----------------	---

Gene ID	4237
----------------	------

mRNA Refseq	NM_017459
--------------------	-----------

Protein Refseq	NP_059453
-----------------------	-----------

MIM	156790
------------	--------

UniProt ID	P55001
-------------------	--------

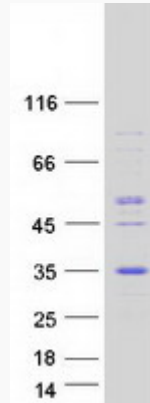
 Tel: 1-631-559-9269 1-516-512-3133

 Email: info@creative-biomart.com  Fax: 1-631-938-8127

 45-1 Ramsey Road, Shirley, NY 11967, USA



SDS-PAGE



Tel: 1-631-559-9269 1-516-512-3133

Email: info@creative-biomart.com Fax: 1-631-938-8127

45-1 Ramsey Road, Shirley, NY 11967, USA