

Recombinant Human MFAP2 Protein, GST-tagged

Cat. No. MFAP2-4392H Lot. No. (See product label)

SPECIFICATION

Product Overview	Human MFAP2 partial ORF (NP_002394, 76 a.a. - 158 a.a.) recombinant protein with GST-tag at N-terminal.
Species	Human
Source	Wheat Germ
ProteinLength	76-158 aa
Description	Microfibrillar-associated protein 2 is a major antigen of elastin-associated microfibrils and a candidate for involvement in the etiology of inherited connective tissue diseases. Four transcript variants encoding two different isoforms have been found for this gene. [provided by RefSeq
Molecular Mass	34.87 kDa
AA Sequence	PAPTPEPGNAELEPTPEGPLDCREEQYPCTRLYSIHRPCKQCLNEVCFYSLRRVYVI NKEICVRTVCAHEELLRADLCRDKFS
Applications	Enzyme-linked Immunoabsorbent Assay Western Blot (Recombinant protein) Antibody Production Protein Array
Notes	Best use within three months from the date of receipt of this protein.

 Tel: 1-631-559-9269 1-516-512-3133

 Email: info@creative-biomart.com  Fax: 1-631-938-8127

 45-1 Ramsey Road, Shirley, NY 11967, USA

Storage Store at -80 centigrade. Aliquot to avoid repeated freezing and thawing.

Storage Buffer 50 mM Tris-HCl, 10 mM reduced Glutathione, pH=8.0 in the elution buffer.

GENE INFORMATION

Gene Name MFAP2 microfibrillar-associated protein 2 [Homo sapiens]

Official Symbol MFAP2

Synonyms MFAP2; microfibrillar-associated protein 2; MAGP; MAGP 1; microfibril-associated glycoprotein 1; MAGP1; MAGP-1; FLJ50901;

Gene ID 4237

mRNA Refseq NM_001135247

Protein Refseq NP_001128719

MIM 156790

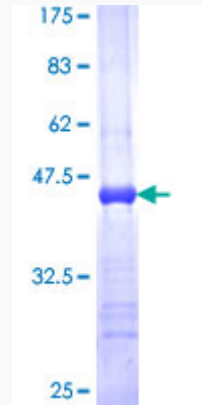
UniProt ID P55001

 Tel: 1-631-559-9269 1-516-512-3133

 Email: info@creative-biomart.com  Fax: 1-631-938-8127

 45-1 Ramsey Road, Shirley, NY 11967, USA

**Quality Control
Testing**



12.5% SDS-PAGE Stained with Coomassie Blue

 Tel: 1-631-559-9269 1-516-512-3133

 Email: info@creative-biomart.com  Fax: 1-631-938-8127

 45-1 Ramsey Road, Shirley, NY 11967, USA