

## Recombinant Human MFAP4 protein, His-Flag-tagged

Cat. No. MFAP4-4532H Lot. No. (See product label)

### SPECIFICATION

<b>Product Overview</b>	Recombinant Human MFAP4 protein(P55083-1)(Val22-Ala255), fused with N-terminal His-Flag tag, was expressed in HEK293.
<b>Species</b>	Human
<b>Source</b>	HEK293
<b>ProteinLength</b>	Val22-Ala255
<b>Tag</b>	N-His-Flag
<b>Form</b>	Lyophilized from 0.22µm filtered solution in PBS (pH 7.4). Normally 8% trehalose is added as protectant before lyophilization.
<b>Bio-activity</b>	Immobilized Human MFAP4, His Tag at 2ug/ml (100ul/well) on the plate. Dose response curve for Anti-MFAP4 Antibody, hFc Tag with the EC50 of 4.3ng/ml determined by ELISA.
<b>Molecular Mass</b>	The protein has a predicted MW of 28.6 kDa. Due to glycosylation, the protein migrates to 38-45 kDa based on Tris-Bis PAGE result.
<b>Endotoxin</b>	Less than 1EU per µg by the LAL method.
<b>Purity</b>	> 95% as determined by Tris-Bis PAGE

 Tel: 1-631-559-9269 1-516-512-3133

 Email: [info@creative-biomart.com](mailto:info@creative-biomart.com)  Fax: 1-631-938-8127

 45-1 Ramsey Road, Shirley, NY 11967, USA

**Storage** Reconstituted protein stable at -80°C for 12 months, 4°C for 1 week. Use a manual defrost freezer and avoid repeated freeze-thaw cycles.

**Reconstitution** Centrifuge tubes before opening. Reconstituting to a concentration more than 100 µg/ml is recommended. Dissolve the lyophilized protein in distilled water.

## GENE INFORMATION

**Gene Name** MFAP4 microfibrillar-associated protein 4 [ Homo sapiens ]

**Official Symbol** MFAP4

**Synonyms** MFAP4; microfibrillar-associated protein 4; microfibril-associated glycoprotein 4; microfibril associated glycoprotein 4;

**Gene ID** 4239

**mRNA Refseq** NM\_001198695

**Protein Refseq** NP\_001185624

**MIM** 600596

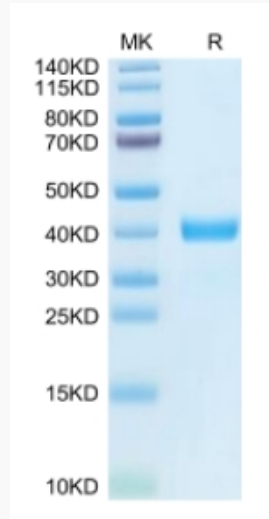
**UniProt ID** P55083

 Tel: 1-631-559-9269 1-516-512-3133

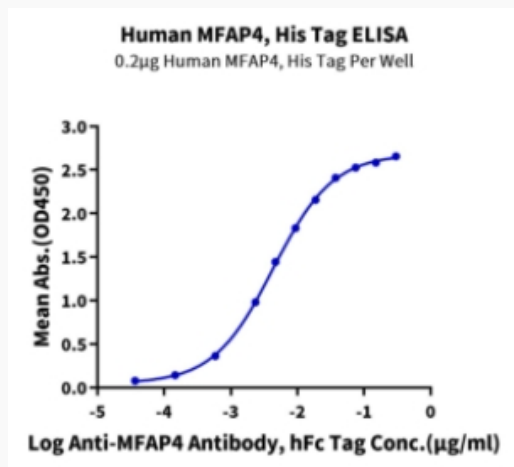
 Email: [info@creative-biomart.com](mailto:info@creative-biomart.com)  Fax: 1-631-938-8127

 45-1 Ramsey Road, Shirley, NY 11967, USA

**Tris-Bis PAGE**



**ELISA Data**



 Tel: 1-631-559-9269 1-516-512-3133

 Email: [info@creative-biomart.com](mailto:info@creative-biomart.com)  Fax: 1-631-938-8127

 45-1 Ramsey Road, Shirley, NY 11967, USA