

Recombinant Human MFGE8 Protein, His&GST-tagged

Cat. No. MFGE8-1775H Lot. No. (See product label)

SPECIFICATION

Product Overview	Recombinant Human MFGE8 Protein (His65-Ile302) with N-His&GST tag was expressed in E. coli.
Species	Human
Source	E.coli
ProteinLength	His65-Ile302
Description	This gene encodes a preproprotein that is proteolytically processed to form multiple protein products. The major encoded protein product, lactadherin, is a membrane glycoprotein that promotes phagocytosis of apoptotic cells. This protein has also been implicated in wound healing, autoimmune disease, and cancer. Lactadherin can be further processed to form a smaller cleavage product, medin, which comprises the major protein component of aortic medial amyloid (AMA). Alternative splicing results in multiple transcript variants.
Form	Freeze-dried powder
Molecular Mass	Predicted Molecular Mass: 56.6 kDa Accurate Molecular Mass: 60 kDa
Purity	> 90%
Applications	Positive Control; Immunogen; SDS-PAGE; WB.

 Tel: 1-631-559-9269 1-516-512-3133

 Email: info@creative-biomart.com  Fax: 1-631-938-8127

 45-1 Ramsey Road, Shirley, NY 11967, USA

Stability	The thermal stability is described by the loss rate. The loss rate was determined by accelerated thermal degradation test, that is, incubate the protein at 37 centigrade for 48h, and no obvious degradation and precipitation were observed. The loss rate is less than 5% within the expiration date under appropriate storage condition.
Storage	Avoid repeated freeze/thaw cycles. Store at 2-8 centigrade for one month. Aliquot and store at -80 centigrade for 12 months.
Storage Buffer	20mM Tris, 150mM NaCl, pH8.0, containing 1mM EDTA, 1mM DTT, 0.01% SKL, 5% Trehalose and Proclin300.
Reconstitution	Reconstitute in ddH ₂ O to a concentration of 0.1-0.5 mg/mL. Do not vortex.

GENE INFORMATION

Gene Name	MFGE8 milk fat globule-EGF factor 8 protein [Homo sapiens (human)]
Official Symbol	MFGE8
Synonyms	MFGE8; milk fat globule-EGF factor 8 protein; SPAG10, sperm associated antigen 10; lactadherin; BA46; EDIL1; hP47; HsT19888; MFG E8; OAcGD3S; SED1; sperm surface protein hP47; medin; sperm associated antigen 10; breast epithelial antigen BA46; O-acetyl disialoganglioside synthase; HMFG; MFGM; MFG-E8; SPAG10;
Gene ID	4240
mRNA Refseq	NM_001114614
Protein Refseq	NP_001108086
MIM	602281

 Tel: 1-631-559-9269 1-516-512-3133

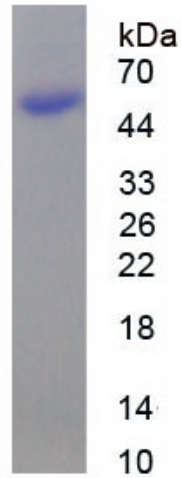
 Email: info@creative-biomart.com  Fax: 1-631-938-8127

 45-1 Ramsey Road, Shirley, NY 11967, USA



UniProt ID

Q08431



Tel: 1-631-559-9269 1-516-512-3133

Email: info@creative-biomart.com Fax: 1-631-938-8127

45-1 Ramsey Road, Shirley, NY 11967, USA