

Recombinant Human MFGE8 Protein, GST-tagged

Cat. No. MFGE8-4385H Lot. No. (See product label)

SPECIFICATION

Product Overview	Human MFGE8 full-length ORF (NP_005919.1, 1 a.a. - 387 a.a.) recombinant protein with GST-tag at N-terminal.
Species	Human
Source	Wheat Germ
ProteinLength	1-387 aa
Description	This gene encodes a preproprotein that is proteolytically processed to form multiple protein products. The major encoded protein product, lactadherin, is a membrane glycoprotein that promotes phagocytosis of apoptotic cells. This protein has also been implicated in wound healing, autoimmune disease, and cancer. Lactadherin can be further processed to form a smaller cleavage product, medin, which comprises the major protein component of aortic medial amyloid (AMA). Alternative splicing results in multiple transcript variants. [provided by RefSeq, Jul 2015]
Molecular Mass	69.5 kDa
AA Sequence	MPRPRLAALCGALLCAPSLLVALDICKSNPCHNGGLCEEISQEVKRGDVFPSYTCTC LKG YAGNH CETK C VEPLGMENGN IANSQIAASSVRVTF LGLQHWVPELARLN RAGM VNAWTPSSND DNPWIQV NLLRRMWVTGVVTQ GASRLASHEYLKAFKVAYS LINGHE FDFIHDV NKKHKEFVGNWNKNAVHV NLFETPVEAQYVRL YPTSCHTACTLRFEL LG CELNGCANPLGLKNNSIPDKQITASSSYKTWGLHLFSWNPSYARLDKQGNFNAWVA GSY GNDQWLQVDL GSSKEVTGIITQGARNFGSVQFVASYKVAYS NDSANWTEYQD

 Tel: 1-631-559-9269 1-516-512-3133

 Email: info@creative-biomart.com  Fax: 1-631-938-8127

 45-1 Ramsey Road, Shirley, NY 11967, USA

PRTGSSKIFPGNWDNHSKKNLFFETPILARYVRILPVAWHNRIALRLELLGC

Applications

Enzyme-linked Immunoabsorbent Assay
 Western Blot (Recombinant protein)
 Antibody Production
 Protein Array

Notes

Best use within three months from the date of receipt of this protein.

Storage

Store at -80 centigrade. Aliquot to avoid repeated freezing and thawing.

Storage Buffer

50 mM Tris-HCl, 10 mM reduced Glutathione, pH=8.0 in the elution buffer.

GENE INFORMATION

Gene Name

MFGE8 milk fat globule-EGF factor 8 protein [Homo sapiens]

Official Symbol

MFGE8

Synonyms

MFGE8; milk fat globule-EGF factor 8 protein; SPAG10, sperm associated antigen 10; lactadherin; BA46; EDIL1; hP47; HsT19888; MFG E8; OAcGD3S; SED1; sperm surface protein hP47; medin; sperm associated antigen 10; breast epithelial antigen BA46; O-acetyl disialoganglioside synthase; HMFG; MFGM; MFG-E8; SPAG10;

Gene ID

4240

mRNA Refseq

NM_001114614

Protein Refseq

NP_001108086

MIM

602281

 Tel: 1-631-559-9269 1-516-512-3133

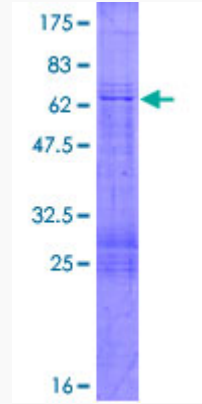
 Email: info@creative-biomart.com  Fax: 1-631-938-8127

 45-1 Ramsey Road, Shirley, NY 11967, USA

UniProt ID

Q08431

Quality Control
Testing



12.5% SDS-PAGE Stained with Coomassie Blue

 Tel: 1-631-559-9269 1-516-512-3133

 Email: info@creative-biomart.com  Fax: 1-631-938-8127

 45-1 Ramsey Road, Shirley, NY 11967, USA