

# Recombinant Human MFGE8 Protein (Met1-Cys335), N-His tagged

Cat. No. MFGE8-4543H Lot. No. (See product label)

## SPECIFICATION

<b>Product Overview</b>	Recombinant human MFGE8 (Met1-Cys335) fused with the N-His tag was expressed in E. coli.
<b>Species</b>	Human
<b>Source</b>	E.coli
<b>ProteinLength</b>	Met1-Cys335
<b>Form</b>	Lyophilized powder/frozen liquid
<b>Molecular Mass</b>	39.81 kDa
<b>Purity</b>	>90% as determined by SDS-PAGE.
<b>Notes</b>	For research use only.
<b>Storage</b>	Use a manual defrost freezer and avoid repeated freeze thaw cycles. Store at 2 to 8 centigrade for one week. Store at -20 to -80 centigrade for twelve months from the date of receipt.
<b>Storage Buffer</b>	0.01M PBS, pH 7.4, 0.02% NLS
<b>Reconstitution</b>	Reconstitute in sterile water for a stock solution.

 Tel: 1-631-559-9269 1-516-512-3133

 Email: [info@creative-biomart.com](mailto:info@creative-biomart.com)  Fax: 1-631-938-8127

 45-1 Ramsey Road, Shirley, NY 11967, USA

**Shipping** They are shipped out with dry ice/blue ice unless customers require otherwise.

## GENE INFORMATION

**Gene Name** MFGE8 milk fat globule-EGF factor 8 protein [ Homo sapiens (human) ]

**Official Symbol** MFGE8

**Synonyms** MFGE8; milk fat globule-EGF factor 8 protein; SPAG10, sperm associated antigen 10; lactadherin; BA46; EDIL1; hP47; HsT19888; MFG E8; OAcGD3S; SED1; sperm surface protein hP47; medin; sperm associated antigen 10; breast epithelial antigen BA46; O-acetyl disialoganglioside synthase; HMFG; MFGM; MFG-E8; SPAG10;

**Gene ID** 4240

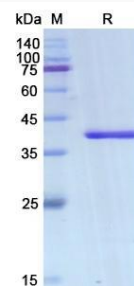
**mRNA Refseq** NM\_001114614

**Protein Refseq** NP\_001108086

**MIM** 602281

**UniProt ID** Q08431

### SDS-PAGE



 Tel: 1-631-559-9269 1-516-512-3133

 Email: [info@creative-biomart.com](mailto:info@creative-biomart.com)  Fax: 1-631-938-8127

 45-1 Ramsey Road, Shirley, NY 11967, USA