

Recombinant Human MFGE8 Protein (Leu24-Cys387), N-His tagged

Cat. No. MFGE8-4544H Lot. No. (See product label)

SPECIFICATION

Product Overview	Recombinant human MFGE8 (Leu24-Cys387) fused with the N-His tag was expressed in E. coli.
Species	Human
Source	E.coli
ProteinLength	Leu24-Cys387
Form	Lyophilized powder/frozen liquid
Molecular Mass	43.08 kDa
Purity	>90% as determined by SDS-PAGE.
Notes	For research use only.
Storage	Use a manual defrost freezer and avoid repeated freeze thaw cycles. Store at 2 to 8 centigrade for one week. Store at -20 to -80 centigrade for twelve months from the date of receipt.
Storage Buffer	0.01M PBS, pH 7.4, 0.02% NLS
Reconstitution	Reconstitute in sterile water for a stock solution.

 Tel: 1-631-559-9269 1-516-512-3133

 Email: info@creative-biomart.com  Fax: 1-631-938-8127

 45-1 Ramsey Road, Shirley, NY 11967, USA

Shipping They are shipped out with dry ice/blue ice unless customers require otherwise.

GENE INFORMATION

Gene Name MFGE8 milk fat globule-EGF factor 8 protein [Homo sapiens (human)]

Official Symbol MFGE8

Synonyms MFGE8; milk fat globule-EGF factor 8 protein; SPAG10, sperm associated antigen 10; lactadherin; BA46; EDIL1; hP47; HsT19888; MFG E8; OAcGD3S; SED1; sperm surface protein hP47; medin; sperm associated antigen 10; breast epithelial antigen BA46; O-acetyl disialoganglioside synthase; HMFG; MFGM; MFG-E8; SPAG10;

Gene ID 4240

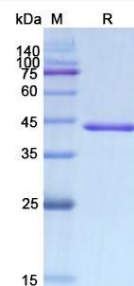
mRNA Refseq NM_001114614

Protein Refseq NP_001108086

MIM 602281

UniProt ID Q08431

SDS-PAGE



 Tel: 1-631-559-9269 1-516-512-3133

 Email: info@creative-biomart.com  Fax: 1-631-938-8127

 45-1 Ramsey Road, Shirley, NY 11967, USA