

# Recombinant Full Length Human MFGE8 protein, His-tagged

Cat. No. MFGE8-587H Lot. No. (See product label)

## SPECIFICATION

<b>Product Overview</b>	Recombinant Full Length Human MFGE8 protein(Q08431-1)(Met 1-Cys 387) was expressed in Insect Cells, fused with a polyhistidine tag at the C-terminus.
<b>Species</b>	Human
<b>Source</b>	Insect Cells
<b>ProteinLength</b>	1-387 aa
<b>Form</b>	Lyophilized from sterile 20mM Tris, 500mM NaCl, pH 7.4, 10% gly.
<b>Molecular Mass</b>	The secreted recombinant human MFGE8 comprises 374 amino acids and has a predicted molecular mass of 42 kDa. The apparent molecular mass of rh MFGE8 is approximately 45 kDa in SDS-PAGE under reducing conditions.
<b>Endotoxin</b>	< 1.0 EU per µg of the protein as determined by the LAL method.
<b>Purity</b>	> 88 % as determined by SDS-PAGE
<b>Storage</b>	Store it under sterile conditions at -20°C to -80°C upon receiving. Recommend to aliquot the protein into smaller quantities for optimal storage. Avoid repeated freeze-thaw cycles.
<b>Reconstitution</b>	It is recommended that sterile water be added to the vial to prepare a stock solution of 0.2 ug/ul. Centrifuge the vial at 4°C before opening to recover the entire contents.

 Tel: 1-631-559-9269 1-516-512-3133

 Email: [info@creative-biomart.com](mailto:info@creative-biomart.com)  Fax: 1-631-938-8127

 45-1 Ramsey Road, Shirley, NY 11967, USA

**protein Refseq-Weblink** [http://www.ncbi.nlm.nih.gov/protein/NP\\_001108086.1](http://www.ncbi.nlm.nih.gov/protein/NP_001108086.1)

**Unit ID** Q08431

**Unit ID-Weblink** <http://www.uniprot.org/uniprot/Q08431>

## GENE INFORMATION

**Gene Name** [MFGE8 milk fat globule-EGF factor 8 protein \[ Homo sapiens \]](#)

**Official Symbol** [MFGE8](#)

**Synonyms** MFGE8; milk fat globule-EGF factor 8 protein; SPAG10, sperm associated antigen 10; lactadherin; BA46; EDIL1; hP47; HsT19888; MFG E8; OAcGD3S; SED1; sperm surface protein hP47; medin; sperm associated antigen 10; breast epithelial antigen BA46; O-acetyl disialoganglioside synthase; HMFG; MFGM; MFG-E8; SPAG10;

**Gene ID** [4240](#)

**mRNA Refseq** [NM\\_001114614](#)

**protein Refseq** NP\_001108086

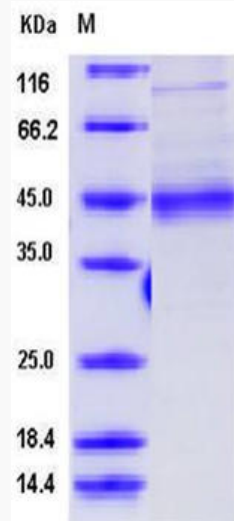
**MIM** [602281](#)

 Tel: 1-631-559-9269 1-516-512-3133

 Email: [info@creative-biomart.com](mailto:info@creative-biomart.com)  Fax: 1-631-938-8127

 45-1 Ramsey Road, Shirley, NY 11967, USA

**SDS-PAGE**



 Tel: 1-631-559-9269 1-516-512-3133

 Email: [info@creative-biomart.com](mailto:info@creative-biomart.com)  Fax: 1-631-938-8127

 45-1 Ramsey Road, Shirley, NY 11967, USA