

Recombinant Human MFGE8 Protein (24-387 aa), His-SUMO-tagged

Cat. No. MFGE8-652H **Lot. No.** (See product label)

SPECIFICATION

Product Overview Recombinant Human MFGE8 Protein (24-387 aa) is produced by E. coli expression system. This protein is fused with a 6xHis-SUMO tag at the N-terminal. Research Area: Cardiovascular. Protein Description: Full Length of Mature Protein.

Species Human

Source E.coli

ProteinLength 24-387 aa

Description Plays an important role in the maintenance of intestinal epithelial homeostasis and the promotion of mucosal healing. Promotes VEGF-dependent neovascularization . Contributes to phagocytic roval of apoptotic cells in many tissues. Specific ligand for the alpha-v/beta-3 and alpha-v/beta-5 receptors. Also binds to phosphatidylserine-enriched cell surfaces in a receptor-independent manner. Zona pellucida-binding protein which may play a role in gamete interaction. Binds specifically to rotavirus and inhibits its replication.¹ Publication.

Form Tris-based buffer, 50% glycerol

Molecular Mass 56.8 kDa

AA Sequence LDICSKNPCHNGGLCEEISQEVRGDVFPSYTCTCLKGYAGNHCETKCV EPLGMENG
NIANSQIAASSVRVTFGLQLQHWVPELARLN RAGMVNAWTPSSNDDNPWIQVNLLRR

 Tel: 1-631-559-9269 1-516-512-3133

 Email: info@creative-biomart.com  Fax: 1-631-938-8127

 45-1 Ramsey Road, Shirley, NY 11967, USA

MWVTGVVTQGASRLASHEYLKAFKVAYSLNGHEFDIFIHDVNKKHKEFVGNWNKNA
 VHVNLFETPVEAQYVRLYPTSCHTACTLRFELLGCELNGCANPLGLKNNNSIPDKQITA
 SSSYKTWGLHLFSWNPSYARLDKQGNFNAWVAGSYGNDQWLQVDLGSSKEVTGII
 TQGARNFGSVQFVASYKVAYSNDSANWTEYQDPRTGSSKIFPGNWDNHSKKNLF
 ETPILARYVRILPVAWHNRIALRLELLGC

Purity > 90% as determined by SDS-PAGE.

Notes Repeated freezing and thawing is not recommended. Store working aliquots at 4 centigrade for up to one week.

Storage The shelf life is related to many factors, storage state, buffer ingredients, storage temperature and the stability of the protein itself. Generally, the shelf life of liquid form is 6 months at -20 centigrade/-80 centigrade. The shelf life of lyophilized form is 12 months at -20 centigrade/-80 centigrade.

Concentration A hardcopy of COA with concentration instruction is sent along with the products.

GENE INFORMATION

Gene Name MFGE8 milk fat globule-EGF factor 8 protein [Homo sapiens]

Official Symbol MFGE8

Synonyms MFGE8; lactadherin; BA46; EDIL1; hP47; HsT19888; MFG E8; OAcGD3S; SED1; medin; HMFG; MFGM; MFG-E8; SPAG10;

Gene ID 4240

mRNA Refseq NM_001114614

 Tel: 1-631-559-9269 1-516-512-3133

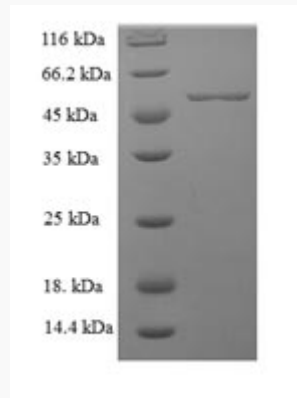
 Email: info@creative-biomart.com  Fax: 1-631-938-8127

 45-1 Ramsey Road, Shirley, NY 11967, USA

Protein Refseq NP_001108086

MIM 602281

UniProt ID Q08431



(Tris-Glycine gel) Discontinuous SDS-PAGE (reduced) with 5% enrichment gel and 15% separation gel.

 Tel: 1-631-559-9269 1-516-512-3133

 Email: info@creative-biomart.com  Fax: 1-631-938-8127

 45-1 Ramsey Road, Shirley, NY 11967, USA