

## Recombinant Human MFI2 protein, His-tagged

Cat. No. MFI2-1692H Lot. No. (See product label)

### SPECIFICATION

<b>Product Overview</b>	Recombinant Human MFI2 protein(P08582-1)(Gly20-Cys709), fused with C-terminal His tag, was expressed in HEK293.
<b>Species</b>	Human
<b>Source</b>	C-His
<b>ProteinLength</b>	Gly20-Cys709
<b>Tag</b>	C-His
<b>Form</b>	Lyophilized from 0.22µm filtered solution in PBS (pH 7.4). Normally 8% trehalose is added as protectant before lyophilization.
<b>Bio-activity</b>	Immobilized Human CD228, His Tag at 1µg/ml (100µl/well) on the plate. Dose response curve for Anti-CD228 Antibody, hFc Tag with the EC50 of 4.1ng/ml determined by ELISA.
<b>Molecular Mass</b>	The protein has a predicted MW of 76.60 kDa. Due to glycosylation, the protein migrates to 78-88 kDa based on Tris-Bis PAGE result.
<b>Endotoxin</b>	Less than 1EU per µg by the LAL method.
<b>Purity</b>	> 95% as determined by Tris-Bis PAGE; > 95% as determined by HPLC.

 Tel: 1-631-559-9269 1-516-512-3133

 Email: [info@creative-biomart.com](mailto:info@creative-biomart.com)  Fax: 1-631-938-8127

 45-1 Ramsey Road, Shirley, NY 11967, USA

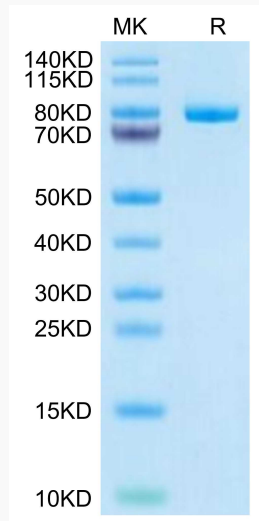
<b>Storage</b>	Reconstituted protein stable at -80°C for 12 months, 4°C for 1 week. Use a manual defrost freezer and avoid repeated freeze-thaw cycles.
<b>Reconstitution</b>	Centrifuge tubes before opening. Reconstituting to a concentration more than 100 µg/ml is recommended. Dissolve the lyophilized protein in distilled water.
<b>GENE INFORMATION</b>	
<b>Gene Name</b>	MFI2 antigen p97 (melanoma associated) identified by monoclonal antibodies 133.2 and 96.5 [ Homo sapiens ]
<b>Official Symbol</b>	MFI2
<b>Synonyms</b>	MFI2; antigen p97 (melanoma associated) identified; melanotransferrin; CD228; FLJ38863; MAP97; membrane bound transferrin like protein; MGC4856; MTF1; membrane-bound transferrin-like protein; melanoma-associated antigen p97, isoform 2;
<b>Gene ID</b>	4241
<b>mRNA Refseq</b>	NM_005929
<b>Protein Refseq</b>	NP_005920
<b>MIM</b>	155750
<b>UniProt ID</b>	P08582

 Tel: 1-631-559-9269 1-516-512-3133

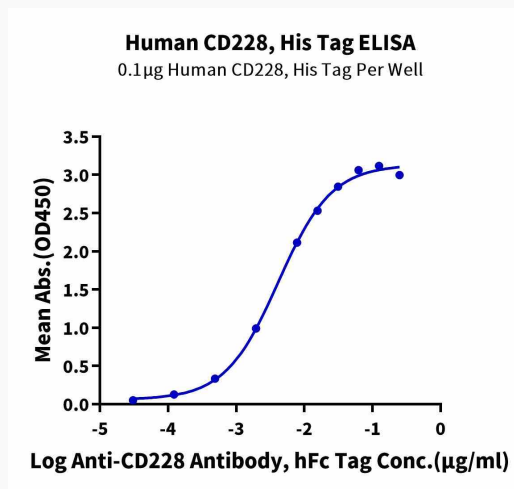
 Email: [info@creative-biomart.com](mailto:info@creative-biomart.com)  Fax: 1-631-938-8127

 45-1 Ramsey Road, Shirley, NY 11967, USA

**Tris-Bis PAGE**



**ELISA**



Tel: 1-631-559-9269 1-516-512-3133

Email: [info@creative-biomart.com](mailto:info@creative-biomart.com) Fax: 1-631-938-8127

45-1 Ramsey Road, Shirley, NY 11967, USA