

## Recombinant Human MFN2 Protein, GST-tagged

Cat. No. MFN2-4380H Lot. No. (See product label)

### SPECIFICATION

<b>Product Overview</b>	Human MFN2 partial ORF ( NP_055689, 661 a.a. - 757 a.a.) recombinant protein with GST-tag at N-terminal.
<b>Species</b>	Human
<b>Source</b>	Wheat Germ
<b>Description</b>	<p>This gene encodes a mitochondrial membrane protein that participates in mitochondrial fusion and contributes to the maintenance and operation of the mitochondrial network. This protein is involved in the regulation of vascular smooth muscle cell proliferation, and it may play a role in the pathophysiology of obesity. Mutations in this gene cause Charcot-Marie-Tooth disease type 2A2, and hereditary motor and sensory neuropathy VI, which are both disorders of the peripheral nervous system. Defects in this gene have also been associated with early-onset stroke. Two transcript variants encoding the same protein have been identified. [provided by RefSeq]</p>
<b>Molecular Mass</b>	36.41 kDa
<b>AA Sequence</b>	FKRQFVEHASEKLQLVISYTGSNCSHQVQQELSGTFAHLCQQVDVTRENLEQEIAA MNKKIEVLDSLQSKAKLLRNKAGWLDSELNMFTHQYLQPSR
<b>Applications</b>	<p>Enzyme-linked Immunoabsorbent Assay Western Blot (Recombinant protein) Antibody Production</p>

 Tel: 1-631-559-9269 1-516-512-3133

 Email: [info@creative-biomart.com](mailto:info@creative-biomart.com)  Fax: 1-631-938-8127

 45-1 Ramsey Road, Shirley, NY 11967, USA

**Protein Array**

<b>Notes</b>	Best use within three months from the date of receipt of this protein.
<b>Storage</b>	Store at -80 centigrade. Aliquot to avoid repeated freezing and thawing.
<b>Storage Buffer</b>	50 mM Tris-HCl, 10 mM reduced Glutathione, pH=8.0 in the elution buffer.

**GENE INFORMATION**

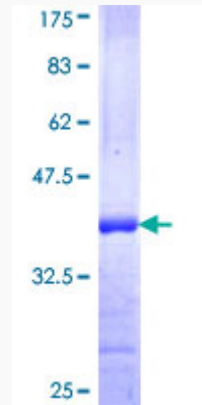
<b>Gene Name</b>	MFN2 mitofusin 2 [ Homo sapiens ]
<b>Official Symbol</b>	MFN2
<b>Synonyms</b>	MFN2; mitofusin 2; mitofusin-2; CMT2A2; CPRP1; KIAA0214; MARF; hyperplasia suppressor; transmembrane GTPase MFN2; mitochondrial assembly regulatory factor; HSG; CMT2A;
<b>Gene ID</b>	9927
<b>mRNA Refseq</b>	NM_001127660
<b>Protein Refseq</b>	NP_001121132
<b>MIM</b>	608507
<b>UniProt ID</b>	O95140

 Tel: 1-631-559-9269 1-516-512-3133

 Email: [info@creative-biomart.com](mailto:info@creative-biomart.com)  Fax: 1-631-938-8127

 45-1 Ramsey Road, Shirley, NY 11967, USA

**Quality Control  
Testing**



12.5% SDS-PAGE Stained with Coomassie Blue

 Tel: 1-631-559-9269 1-516-512-3133

 Email: [info@creative-biomart.com](mailto:info@creative-biomart.com)  Fax: 1-631-938-8127

 45-1 Ramsey Road, Shirley, NY 11967, USA