

Recombinant Human MFRP Protein, GST-tagged

Cat. No. MFRP-4377H Lot. No. (See product label)

SPECIFICATION

Product Overview	Human MFRP partial ORF (NP_113621, 480 a.a. - 579 a.a.) recombinant protein with GST-tag at N-terminal.
Species	Human
Source	Wheat Germ
Description	This gene encodes a member of the frizzled-related proteins. The encoded protein may play a role in eye development, as mutations in this gene have been associated with nanophthalmos, posterior microphthalmia, retinitis pigmentosa, foveoschisis, and optic disc drusen. The protein is encoded by a bicistronic mRNA, which also encodes C1q and tumor necrosis factor related protein 5
Molecular Mass	36.74 kDa
AA Sequence	NTTAFPNIWVGMITQEEVVEVLSGYKSLTSLPCYQHFRLLCGLLVPRCTPLGSVLP PCRSVCQEAHQCSGLALLGTPWPFNCNRLPEAADLEACAQP
Applications	Enzyme-linked Immunoabsorbent Assay Western Blot (Recombinant protein) Antibody Production Protein Array
Notes	Best use within three months from the date of receipt of this protein.

 Tel: 1-631-559-9269 1-516-512-3133

 Email: info@creative-biomart.com  Fax: 1-631-938-8127

 45-1 Ramsey Road, Shirley, NY 11967, USA

Storage Store at -80 centigrade. Aliquot to avoid repeated freezing and thawing.

Storage Buffer 50 mM Tris-HCl, 10 mM reduced Glutathione, pH=8.0 in the elution buffer.

GENE INFORMATION

Gene Name [MFRP membrane frizzled-related protein \[Homo sapiens \]](#)

Official Symbol [MFRP](#)

Synonyms

MFRP; membrane frizzled-related protein; C1QTNF5; complement C1q tumor necrosis factor related protein 5 precursor variant 1; FLJ30570; membrane type frizzled related protein; NNO2; rd6; membrane-type frizzled-related protein; RD6; MCOP5; MGC32938; DKFZp586B0621;

Gene ID [83552](#)

mRNA Refseq [NM_031433](#)

Protein Refseq [NP_113621](#)

MIM [606227](#)

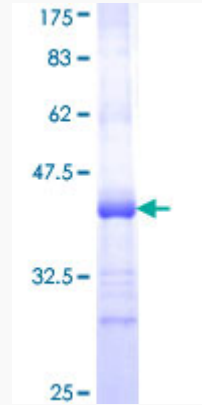
UniProt ID [Q9BY79](#)

 Tel: 1-631-559-9269 1-516-512-3133

 Email: info@creative-biomart.com  Fax: 1-631-938-8127

 45-1 Ramsey Road, Shirley, NY 11967, USA

**Quality Control
Testing**



12.5% SDS-PAGE Stained with Coomassie Blue

 Tel: 1-631-559-9269 1-516-512-3133

 Email: info@creative-biomart.com  Fax: 1-631-938-8127

 45-1 Ramsey Road, Shirley, NY 11967, USA