

Recombinant Human MFSD5 Protein, GST-tagged

Cat. No. MFSD5-4374H Lot. No. (See product label)

SPECIFICATION

Product Overview	Human MFSD5 full-length ORF (AAH67795.1, 1 a.a. - 450 a.a.) recombinant protein with GST-tag at N-terminal.
Species	Human
Source	Wheat Germ
Description	MFSD5 (Major Facilitator Superfamily Domain Containing 5) is a Protein Coding gene. GO annotations related to this gene include molybdate ion transmembrane transporter activity.
Molecular Mass	76.2 kDa
AA Sequence	MLVTAYLAFVGLLASCLGLELSRCRAKPPGRACSNPSFLRFQLDFYQVYFLALAADW LQAPYLYKLYQHYYFLEGQIAILYVCGLASTVLFGLVASSLVDWLGRKNSCVLFSLTY SLCCLTKLSQDYFVMLVGRALGGLSTALLFSAFEAWYIHEHVERHDFPAEWIPATFA RAAFWNHVLAVVAGVAAEAVASWIGLGPVAPFVAAIPLLALAGALALRNWGENYDR QRAFSRTCAGGLRCLLSDRRVLLLGTIQALFESVIFVFLWTPVLDPHGAPLGIIFSSF MAASLLGSSLYRIATSKRYHLQPMHLLSLAVLIVVFSLFMLTFSTSPGQESPVESFIAP LLIELACGLYFSPSMSFLRRKVIPETEQAGVLNWFRVPLHSLACLGLLVLHDSRKTGT RNMFSICSAVMVMALLAVVGLFTVVRHDAELRVPSPTTEEPYAPEL
Applications	Enzyme-linked Immunoabsorbent Assay Western Blot (Recombinant protein) Antibody Production

 Tel: 1-631-559-9269 1-516-512-3133

 Email: info@creative-biomart.com  Fax: 1-631-938-8127

 45-1 Ramsey Road, Shirley, NY 11967, USA

Protein Array

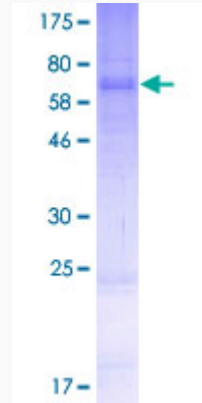
Notes	Best use within three months from the date of receipt of this protein.
Storage	Store at -80 centigrade. Aliquot to avoid repeated freezing and thawing.
Storage Buffer	50 mM Tris-HCl, 10 mM reduced Glutathione, pH=8.0 in the elution buffer.

GENE INFORMATION

Gene Name	MFSD5 major facilitator superfamily domain containing 5 [Homo sapiens]
Official Symbol	MFSD5
Synonyms	MFSD5; major facilitator superfamily domain containing 5
Gene ID	84975
mRNA Refseq	NM_032889
Protein Refseq	NP_116278
UniProt ID	Q6N075

 Tel: 1-631-559-9269 1-516-512-3133 Email: info@creative-biomart.com  Fax: 1-631-938-8127 45-1 Ramsey Road, Shirley, NY 11967, USA

**Quality Control
Testing**



12.5% SDS-PAGE Stained with Coomassie Blue

 Tel: 1-631-559-9269 1-516-512-3133

 Email: info@creative-biomart.com  Fax: 1-631-938-8127

 45-1 Ramsey Road, Shirley, NY 11967, USA