

Recombinant Human MGLL Protein, GST-tagged

Cat. No. MGLL-5303H Lot. No. (See product label)

SPECIFICATION

Product Overview	Human MGLL full-length ORF (NP_009214.1, 1 a.a. - 313 a.a.) recombinant protein with GST-tag at N-terminal.
Species	Human
Source	Wheat Germ
Description	Monoglyceride lipase (MGLL; EC 3.1.1.23) functions together with hormone-sensitive lipase (LIPE; MIM 151750) to hydrolyze intracellular triglyceride stores in adipocytes and other cells to fatty acids and glycerol. MGLL may also complement lipoprotein lipase (LPL; MIM 238600) in completing hydrolysis of monoglycerides resulting from degradation of lipoprotein triglycerides (Karlsson et al., 2001 [PubMed 11470505]).[supplied by OMIM
Molecular Mass	60.7 kDa
AA Sequence	METGPEDPSSMPEESSPRRTPQSIPYQDLPHLVNADGQYLFCRYWKPTGTPKALIF VSHGAGEHSGRYEELARMLMGLDLLVFAHDHVGHGQSEGERMVVSDFHVFVRDVL QHVDMSMQDYPLPVFLLGHSMGGAIALTAERPGHFAGMVLISPLVLNAPESATT FKVLAAKVLNVLPNLSLGPIDSSVLSRNKTEVDIYNSDPLICRAGLKVCFGIQLLNAV SRVERALPKLTVPFLLLQGSADRLCDSKGAYLLMELAKSQDKTLKIYEGAYHVLHKEL PEVTNSVFHEINMWVSQRTATAGTASPP
Applications	Enzyme-linked Immunoabsorbent Assay Western Blot (Recombinant protein)

 Tel: 1-631-559-9269 1-516-512-3133

 Email: info@creative-biomart.com  Fax: 1-631-938-8127

 45-1 Ramsey Road, Shirley, NY 11967, USA



	Antibody Production Protein Array
Notes	Best use within three months from the date of receipt of this protein.
Storage	Store at -80 centigrade. Aliquot to avoid repeated freezing and thawing.
Storage Buffer	50 mM Tris-HCl, 10 mM reduced Glutathione, pH=8.0 in the elution buffer.
GENE INFORMATION	
Gene Name	MGLL monoglyceride lipase [Homo sapiens]
Official Symbol	MGLL
Synonyms	MGLL; monoglyceride lipase; HU K5; MGL; monoacylglycerol lipase; lysophospholipase homolog; HUK5; MAGL; HU-K5;
Gene ID	11343
mRNA Refseq	NM_001003794
Protein Refseq	NP_001003794
MIM	609699
UniProt ID	Q99685

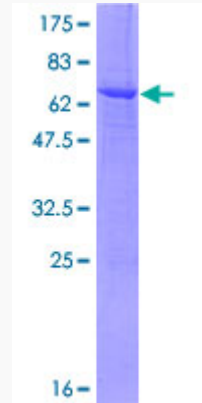
Tel: 1-631-559-9269 1-516-512-3133

Email: info@creative-biomart.com Fax: 1-631-938-8127

45-1 Ramsey Road, Shirley, NY 11967, USA

Quality Control

Testing:



12.5% SDS-PAGE Stained with Coomassie Blue.

 Tel: 1-631-559-9269 1-516-512-3133

 Email: info@creative-biomart.com  Fax: 1-631-938-8127

 45-1 Ramsey Road, Shirley, NY 11967, USA