

Recombinant Human MGP Protein, GST-tagged

Cat. No. MGP-5306H Lot. No. (See product label)

SPECIFICATION

Product Overview	Human MGP full-length ORF (AAH05272, 1 a.a. - 103 a.a.) recombinant protein with GST-tag at N-terminal.
Species	Human
Source	Wheat Germ
Description	This gene encodes a member of the osteocalcin/matrix Gla family of proteins. The encoded vitamin K-dependent protein is secreted by chondrocytes and vascular smooth muscle cells, and functions as a physiological inhibitor of ectopic tissue calcification. Carboxylation status of the encoded protein is associated with calcification of the vasculature in human patients with cardiovascular disease and calcification of the synovial membranes in osteoarthritis patients. Mutations in this gene cause Keutel syndrome in human patients, which is characterized by abnormal cartilage calcification, peripheral pulmonary stenosis and facial hypoplasia. [provided by RefSeq, Sep 2016]
Molecular Mass	37.07 kDa
AA Sequence	MKSLILLAILAALAVVTLCYESHESMESYELNPFINRRNANTFISPQQRWRAKVQERIR ERSKPVHELNREACDDYRLCERYAMVYGYNAAYNRYFRKRRGAK
Applications	Enzyme-linked Immunoabsorbent Assay Western Blot (Recombinant protein) Antibody Production

 Tel: 1-631-559-9269 1-516-512-3133

 Email: info@creative-biomart.com  Fax: 1-631-938-8127

 45-1 Ramsey Road, Shirley, NY 11967, USA

Protein Array

Notes	Best use within three months from the date of receipt of this protein.
Storage	Store at -80 centigrade. Aliquot to avoid repeated freezing and thawing.
Storage Buffer	50 mM Tris-HCl, 10 mM reduced Glutathione, pH=8.0 in the elution buffer.

GENE INFORMATION

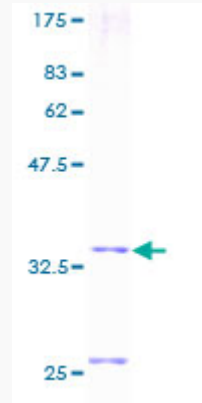
Gene Name	MGP matrix Gla protein [Homo sapiens]
Official Symbol	MGP
Synonyms	MGP; matrix Gla protein; cell growth-inhibiting gene 36 protein; NTI; GIG36; MGLAP;
Gene ID	4256
mRNA Refseq	NM_000900
Protein Refseq	NP_000891
MIM	154870
UniProt ID	P08493

 Tel: 1-631-559-9269 1-516-512-3133

 Email: info@creative-biomart.com  Fax: 1-631-938-8127

 45-1 Ramsey Road, Shirley, NY 11967, USA

Quality Control
Testing:



12.5% SDS-PAGE Stained with Coomassie Blue.

 Tel: 1-631-559-9269 1-516-512-3133

 Email: info@creative-biomart.com  Fax: 1-631-938-8127

 45-1 Ramsey Road, Shirley, NY 11967, USA