

Recombinant Mouse Mgp Protein, His-tagged

Cat. No. MGP-95M Lot. No. (See product label)

SPECIFICATION

Product Overview	Recombinant Mouse Mgp(Tyr20~Tyr104) fused with His tag at N-terminal was expressed in E. coli.
Species	Mouse
Source	E.coli
ProteinLength	Tyr20~Tyr104
Description	This gene encodes a member of the osteocalcin/matrix Gla family of proteins. The encoded vitamin K-dependent protein is secreted by chondrocytes and vascular smooth muscle cells, and functions as a physiological inhibitor of ectopic tissue calcification. This protein also inhibits angiogenesis. Mice lacking a functional copy of this gene exhibit impaired differentiation of endothelial cells, reduced stature, and calcification and rupture of the vasculature leading to premature death.
Form	PBS, pH7.4, containing 0.01% SKL, 1mM DTT, 5% Trehalose and Proclin300.
Molecular Mass	16.2kDa
Endotoxin	<1.0EU per 1ug (determined by the LAL method)
Purity	> 95%
Applications	Positive Control; Immunogen; SDS-PAGE; WB.

 Tel: 1-631-559-9269 1-516-512-3133

 Email: info@creative-biomart.com  Fax: 1-631-938-8127

 45-1 Ramsey Road, Shirley, NY 11967, USA

If bio-activity of the protein is needed, please check active protein

Stability

The thermal stability is described by the loss rate. The loss rate was determined by accelerated thermal degradation test, that is, incubate the protein at 37 centigrade for 48h, and no obvious degradation and precipitation were observed. The loss rate is less than 5% within the expiration date under appropriate storage condition.

Storage

Avoid repeated freeze/thaw cycles. Store at 2-8 centigrade for one month. Aliquot and store at -80 centigrade for 12 months.

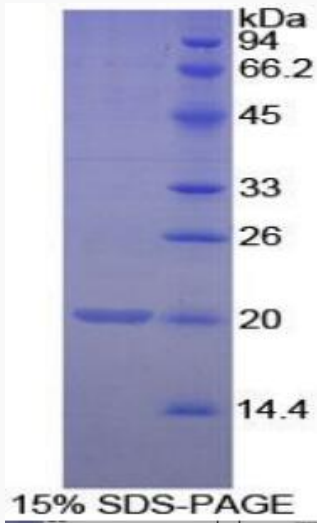
GENE INFORMATION

Gene Name	Mgp matrix Gla protein [<i>Mus musculus</i>]
Official Symbol	Mgp
Synonyms	MGP; matrix Gla protein; matrix gamma-carboxyglutamate (gla) protein; Mglap;
Gene ID	17313
mRNA Refseq	NM_008597
Protein Refseq	NP_032623
UniProt ID	P19788

 Tel: 1-631-559-9269 1-516-512-3133

 Email: info@creative-biomart.com  Fax: 1-631-938-8127

 45-1 Ramsey Road, Shirley, NY 11967, USA



Tel: 1-631-559-9269 1-516-512-3133

Email: info@creative-biomart.com Fax: 1-631-938-8127

45-1 Ramsey Road, Shirley, NY 11967, USA